

**THE**

**PUBLIC LIBRARY**  
Stoneham, MA 02180

**TORCH**

**1954**



1875

1876

1877

1878

1879





# THE

21  
BAC  
ruary



FATHER  
of the BRIDE  
7 NOVEMBER 20  
8 NOVEMBER 20



CORNER  
FILE



# TORCH

STONEHAM HIGH SCHOOL  
SEVENTEENTH EDITION  
STONEHAM MASS.



FRANK NICHOLSON

## CLASS OF 1954



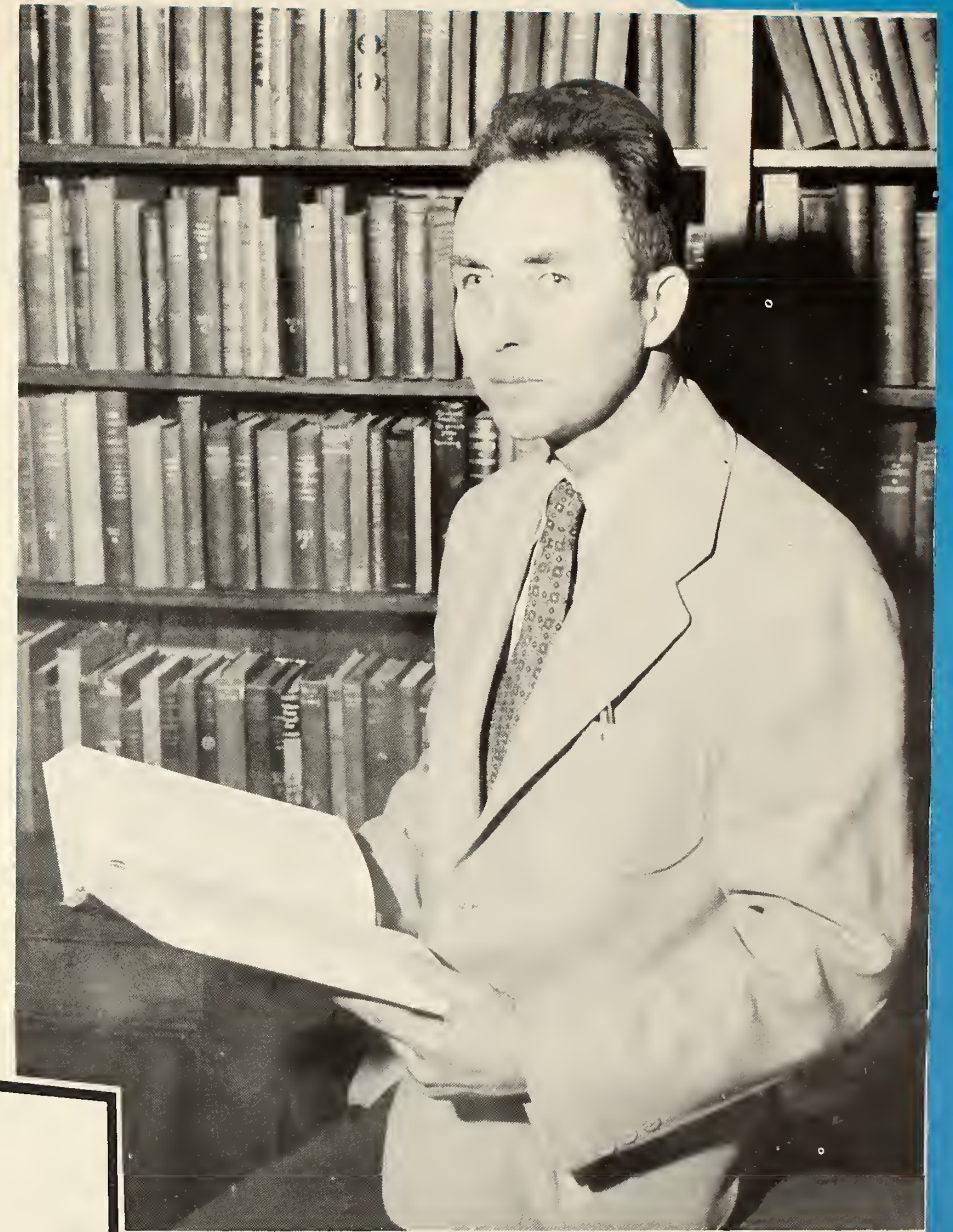






Because of your understanding, patience, and progressive methods you have helped the students of Stoneham High School to acquire a thorough knowledge of science and mathematics. In addition to these tangible contributions, your versatility, tolerance, and friendship have personally enriched our lives. In recognition of your unselfish efforts in behalf of the Class of 1954, we dedicate this book to you.

# DEDICATION



ELBA B. CARRIER

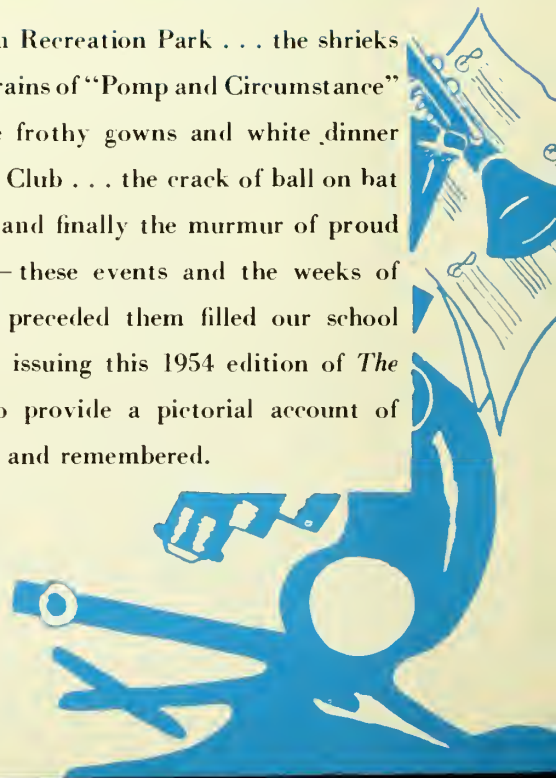
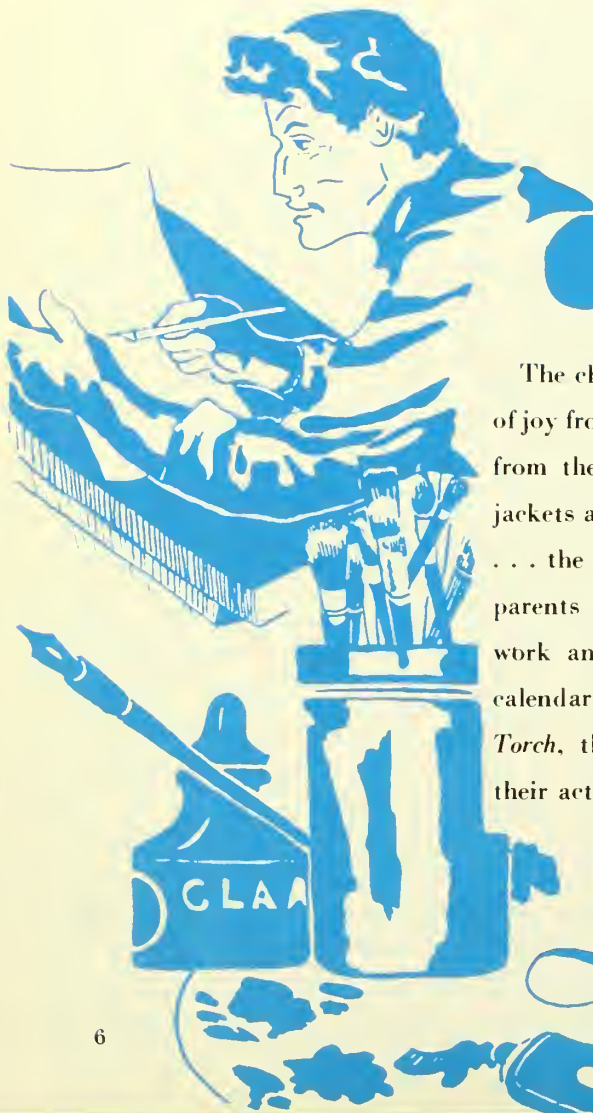




FRANK NICHOLSON

# FOREWORD

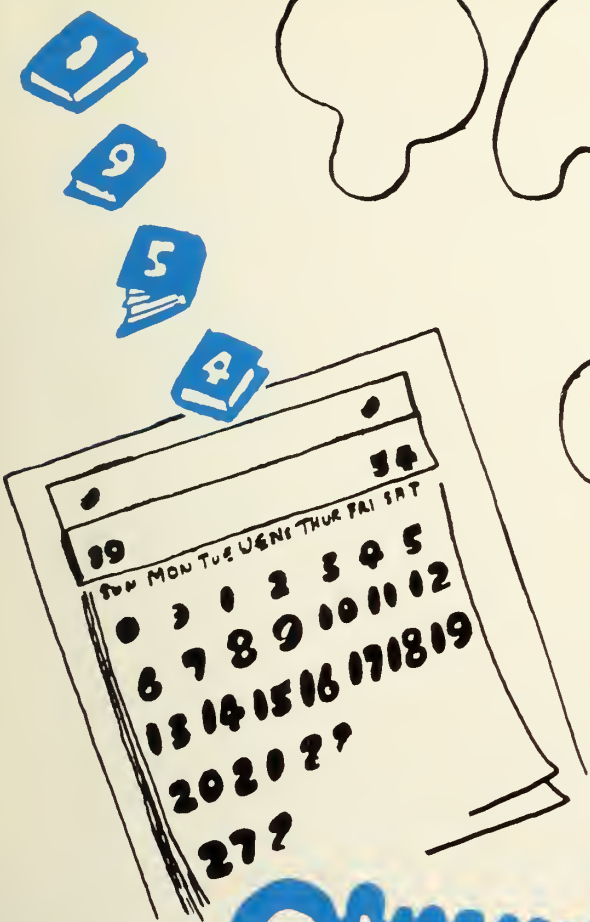
The cheers and shouts from Recreation Park . . . the shrieks of joy from the gym . . . the strains of "Pomp and Circumstance" from the town hall . . . the frothy gowns and white dinner jackets at Bear Hill Country Club . . . the crack of ball on bat . . . the College Boards . . . and finally the murmur of proud parents at commencement — these events and the weeks of work and anticipation that preceded them filled our school calendar to overflowing. By issuing this 1954 edition of *The Torch*, the seniors wished to provide a pictorial account of their activities to be enjoyed and remembered.





ONE

YEAR



ADMINISTRATION — 8

AUTUMN — 13

WINTER — 23

SPRING — 30

SUMMER — 41

# ADMINISTRATION



Service with a smile! Vice Principal Wendell Horton. Secretaries: Mrs. Antoinette Gargano, Mrs. Louise Nelson



Principal William Nadeau, Editor Thomas Walsh plan for the future



Superintendent C. Newton Heath, Principal William Nadeau, Vice Principal Wendell Horton, our administrators





### MUSIC

"Out of the commonplace . . . into the rare." These words describe the personalities and musical achievements of our inspired music directors, Mrs. Gilda Wipperman and Mr. Alfred Todaro.



### ENGLISH

Compositions . . . speeches . . . yearbook . . . senior play . . . Shakespeare . . . Milton . . . Keats! Both in extra-curricular activities and in class the English teachers influenced our lives. For helping us to acquire a sense of values, to develop clear thinking and perception, and to express ourselves logically and sensitively, our thanks go to Miss Ruth Finn, Mr. Stanley Bates, Mr. Timothy Higgins, Mrs. Sadie Marshall, and Mrs. Vera Curley, who was absent when this picture was taken.



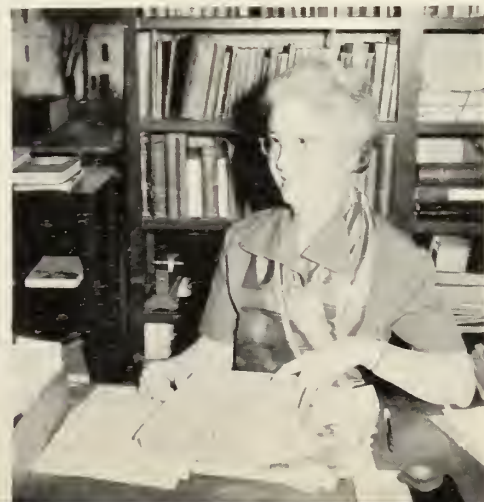
### ART

Graciousness and unsurpassed talent make Mrs. Eleanor Baker the perfect art supervisor. Creative decorations for the Carnival Pageant, Memorial Day, and Graduation Program were proof of the fact that Mrs. Baker helped to make our days at S. H. S. memorable.

# FACULTY

### LIBRARY

Miss Miriam Marsh, our librarian, gave us the key to all knowledge, the treasure house of books, not only by her guidance in the library, but also by her own wisdom.





### LANGUAGE

Travel is broadening, and through the teaching of Mrs. Gertrude Cariello, Latin teacher, and Miss Lydia Risi, French teacher, we imaginatively journeyed into foreign lands and learned much about the language, customs, and literature of other countries.



### SCIENCE

To create a greater interest in science through the teaching of biology, chemistry, and physics were the chief aims of Mr. Robert Millett, also our hockey coach, and Mr. William Miller, Head of the Science Department.

### MATHEMATICS

To most students, math is rather difficult, especially in its higher forms, but the courses at Stoneham High were made more enjoyable for all by the humor of Mr. Chester Jordan, assistant hockey coach, and Mr. Elba Carrier, the Ellery Queen of the faculty.



### SOCIAL STUDIES

The future depends on the past. With this thought in mind our history teachers impressed us with our rich heritage and prepared us to be good Americans. Mr. Roger Lamson, Mr. Anthony Deteso, Mr. Earle Thibodeau, Mr. Frank Driscoll, and Mr. John Fawcett.







### HOME ECONOMICS

The Home Economics Department under the capable direction of Miss Gracey Magrath and Miss Ellen McLaughlin, provided us with many opportunities to learn about household arts and home management.



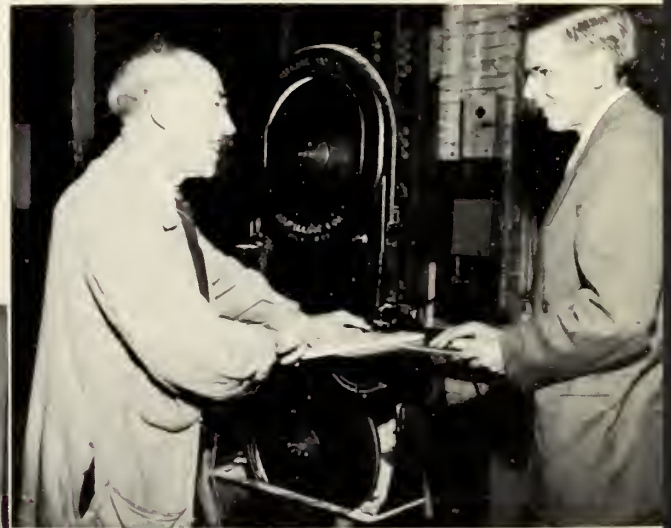
### PHYSICAL EDUCATION

Gym is everybody's favorite period — a time to release pent-up energy while playing field hockey, basketball, football, or other sports. Not only did we develop stronger bodies, but also sounder minds, under the coaching of Mrs. Vera Lawson, Mr. Karl Elerin, and Miss Madeleine Topham.

# FACULTY

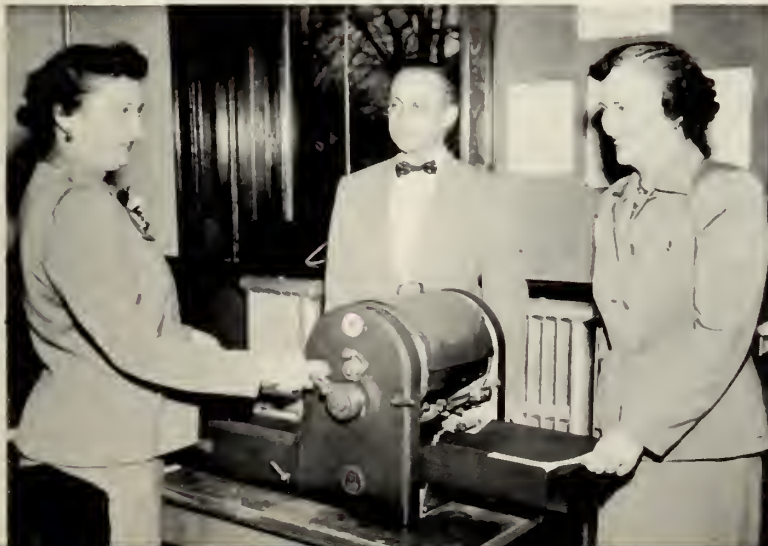
### BUSINESS

Thanks to the capable instruction and patience of Mrs. Margaret Garvin, Mr. Clark Richardson, and Miss Anna M. Regish, many of our seniors were prepared for their business careers.



### SHOP

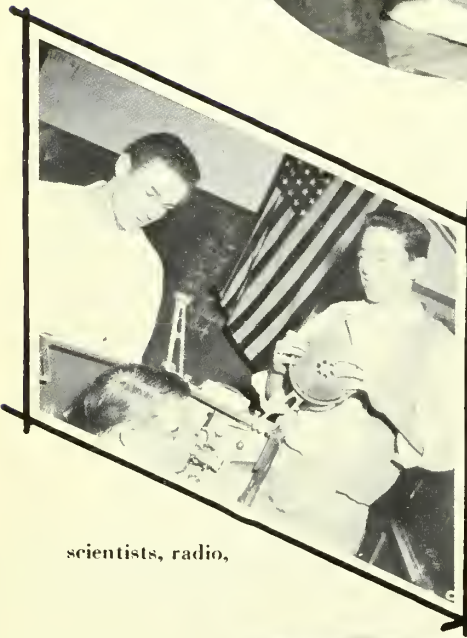
Ever wonder who teaches the boys how to make lamps and other "objets d'art?" Here they are, the Stoneham High shop experts, Mr. Arthur Bushway and Mr. Walter Herrick, the latter also the hard-working ticket manager for the Carnival Ball and senior play.





# Senior Classes

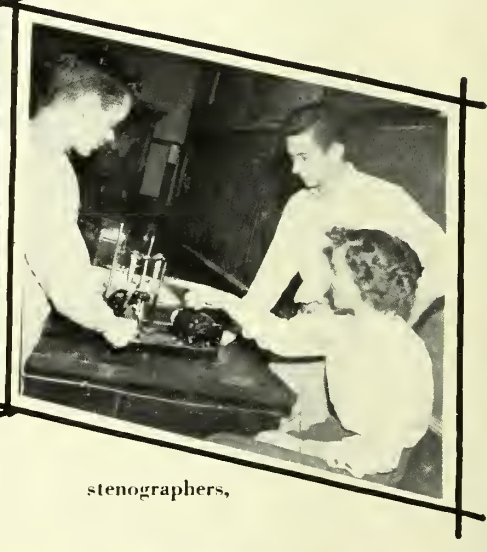
What shall we be —



scientists, radio,



and TV performers,



stenographers,



typists, or homemakers?



All help to



make America!



# AUTUMN

53

19

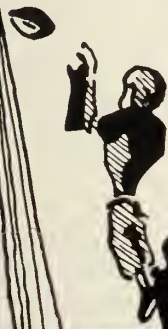


CHEER LEADERS

SENIOR PLAY...



CLASS ELECTIONS



FOOTBALL

BAND AND MAJORETTES



F. NICHOLSON

# STUDENT COUNCIL



Citizens of tomorrow



**STUDENT COUNCIL OFFICERS:** *President, Dick Steel; Vice President, James Ruma; Secretary, Bette Flynn; Treasurer, Mary Lou Giganti; Junior Vice President, Robert Vetromile; Sophomore Vice President, Joan Gilmartin; Adviser — Mr. Wendell Horton*

In carrying out democratic ideas, any group deserves a chance to express opinions in matters related to the group. In Stoneham High School we have such an opportunity through the Student Council. The student body, through its representatives, can offer suggestions, ask questions, and take a real part in school affairs. This year the Council had charge of class elections in the school; sponsored a record poll, the football rallies, and the Winter Carnival; helped with the Booster Club campaign; and made plans for the care of the school and grounds. This was the Student Council—the Voice of Stoneham High!

The spark injected in the Athletic Association this year was magnetic. The Boosters Club membership drive, headed by Mr. Timothy Higgins and his A. A. officers, with the cooperation of the student body and townspeople, met with outstanding success. Over seven hundred memberships were sold at a dollar apiece, and Booster buttons were distributed to members and participants. The A. A. membership drive was equally successful with over six hundred

memberships sold. Besides its financial success, the A. A. created interest, enthusiasm, and participation in all our athletic programs.

# A. A.

**A. A. OFFICERS**  
*President — Peter Berrini  
Vice President — Carole Carbone  
Secretary — Doris Barney  
Treasurer — Paul Griffin*







Editors T. Walsh, R. Tyler, J. Ezekian, E. Pulsifer, J. Fleisher, C. Peacock, C. Carbone, and J. Thornton in action.

Did you ever think about the creative work that goes into the publication of **THE TORCH**—the initial planning of the content and layout, drawings, photography, dummies, copy, finances, and distribution! For all this, our sincere thanks go to all the staff who contributed willingly of their time and talents in preparing this book. We particularly commend Frank Nicholson, our artist, for working tirelessly on original and effective layout and clever cartoons. We appreciate the help of Mrs. Margaret Garvin in keeping our finances straight and the guidance of Miss Ruth Finn in encouraging us to create a Torch to carry proudly as we leave Stoneham High School.

*Tom Walsh*  
Editor

## TORCH STAFF



F. Nicholson, P. Duffy, D. Simons, J. Rafferty, A. BenDavid, and B. Viera planning lay-out.



W. McCarthy, R. Brown, D. Peacor, and R. Larsen directed advertising campaign



A house divided



Get that tilt right, Peg! or else . . .

## FATHER OF THE

**Father of the Bride**, directed by our talented coach, Mrs. Vera Curley, was presented on November 20, 1953, at the Stoneham Hall by the senior class. Who will ever forget the new friends made during rehearsals . . . the cast fortified with cokes and submarine sandwiches . . . the thrill of hearing "Curtain going up!" . . . the



Watch your audience! !



The bride beautiful!



So "life-like"!





Curtain call

"Oh, heck! Sis!  
Make up your mind,  
will you"?



Grab that leg, Red.



Making sound effects



Wait till the Reading girls see me!

# BRIDE

applause of the receptive audience . . . the hard work of all the players and the stagehands repaid, at last, by the one hundred and thirty-five minutes of *Father of the Bride*.



First row—B. Flynn, N. Scammon, M. Giganti, C. McCarthy, G. Griffin. Second row—L. Baldwin, S. Wardwell, C. Peacock, C. Seaver, P. Squires, D. Eramo, M. Darling.

School spirit . . . enthusiasm . . . pep . . . vim . . . vigor . . . vitality! These qualities describe the energetic girls who at every school game led our cheering section! Mary Lou Giganti, Carolyn Seaver, Geraldine Griffin, Carol McCarthy, Donna Eramo, Carol Peacock, Nancy Scammon, Martha Darling, Sandra Wardwell, Bette Flynn, Loret Baldwin, and Phyllis Squires were always ready at the right moment to lead "Fight Team Fight" or "Give a Yell" for the team! Stoneham High was really proud of these cheerleaders dressed in blue and white.

# CHEERLEADERS



The Rockettes







First row: L. Crupi, N. Jenkins, B. Prive, *Co-Captain* C. Carbone, *Co-Captain* D. Barney, B. Port, M. Hanford, S. MacKay. Second row: *Manager* P. Gedney, J. Griffin, S. Kyle, D. Eramo, C. Peacock, P. Squires, C. Seaver, A. Lanzetta, D. Chaput, M. Buckley, P. Simons. *Coaches* — Mrs. Vera Lawson, Miss Madeleine Topham.

## FIELD HOCKEY

Sparked by Carol Peacock and the junior forward, Phyllis Squires, the Blue and White field hockey team throughout the season fought gamely. After three rather dismal games, the Blue and White club rallied to blank Malden, with Phyllis Squires scoring two goals, and to hold Woburn and Melrose to scoreless ties.



*Co-Captains* Carbone and Barney confer with *Coach* Lawson



Attack that girl!





Timber — !

**SCOREBOARD**  
**STONEHAM vs. OPPONENTS**

7	Melrose	32
0	Wakefield	19
18	Lexington	18
13	Winchester	26
12	Punchard	0
18	Maynard	13
12	Woburn	0
12	Concord	34
0	Reading	7

# FOOTBALL



*First row — J. Robinson, D. Symes, R. Heerter, D. Griffin, D. Woodbury, Co-captain P. Berrini, R. Vetromile, F. Fionda, R. Davidson. Second row — J. Lawrence, Co-captain J. Dixon, E. Thompson, R. Steele, G. Pollock, L. Saunders, C. Patterson, J. Fleisher, R. Hart*

Football practice commenced in mid-August and continued regularly throughout the season. Coach Tony De Teso kept the squad on their toes. Coach Frank Driscoll worked the line and Coach John Faweett assisted in the backfield. The seniors who played were Co-captains Peter Berrini and Joe Dixon. Dick Steele, Dave Woodbury, Jack Robinson, John Fleisher, Paul Griffin, Ed Thompson, and Dick Taylor. The team tied one game, lost five, and won three games.





With colorful uniforms, precision marching, and impressive music, the band helped to make our sports, games, and rallies successful. The band provided us with special entertainment during the halves of all nine football games. Under the direction of Mr. Alfred Todaro, the band had one of its best years. We salute our hard-working band whose enthusiasm contributed a great deal to our school spirit.

Twirling batons and flashing uniforms introduced the S. H. S. majorettes who gave a spirited routine for the Saturday afternoon sport fans. Their long hours of practice paid off when these attractive majorettes exhibited their spectacular twirling and marching at the games. Congratulations to our drum majorettes!



Hats off to the best S. H. S. band in years!



Hold her steady, girls



MAJORETTES: *First row* — D. Heywood, J. Spooner, R. Ricks. *Second row* — P. Simmons, L. Deacon, B. Viera, J. Hanson, C. Carbone, B. Smith, A. Nagle, T. Fallavolitta, P. Duffy, J. Kendall, D. Perrins, J. Ezekian

**BAND**

**MAJORETTES**





The daily constitutional



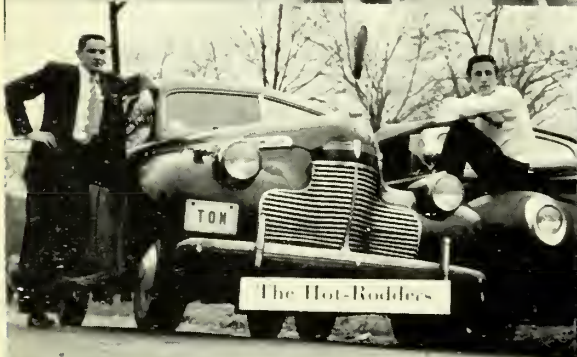
Senior play promoters



A cute little armful



Oh, you doll!



The Hot-Rodders



Ushers at senior play



The Mascot



The pause that refreshes



# WONTER

CARNIVAL BALL



HOCKEY



DANCES AND RECORD HOPS



BASKETBALL



F. NICHOLSON



King Peter and Queen Bette of Dreamworld



TV starlet, Barbara Port

# CARNIVAL

Winter festivities, including interscholastic games and sports events, were climaxed by the Winter Carnival coronation pageant and grand ball. This year King Peter Berrini and Queen Bette Flynn, assisted by ten lovely attendants, enjoyed the spectacular performance of the court entertainers trained by Miss Harriet Fitzgerald, Mrs. Vera Lawson, and Miss Madeleine Topham.



The royal waltz



S. H. S. Mariners



The heavenly chorus





Hep-cats all!



Guys and dolls



Lords and Ladies



Majestic splendor

# Ball

Mrs. Eleanor Baker, art supervisor, and the student decorating committee created the *dream-world* setting with the royal throne set in clouds and stars. This beautiful background and the heavenly music, provided by Mrs. Gilda Wiperman's talented singers, created the atmosphere for an unforgettable Winter Carnival Ball.



Wooden soldiers on parade



Our favorite emcee, Jack Robinson



The Wig-walkers



A great success



The drawing card, Bob Clayton

# BOB CLAYTON RECORD HOP...



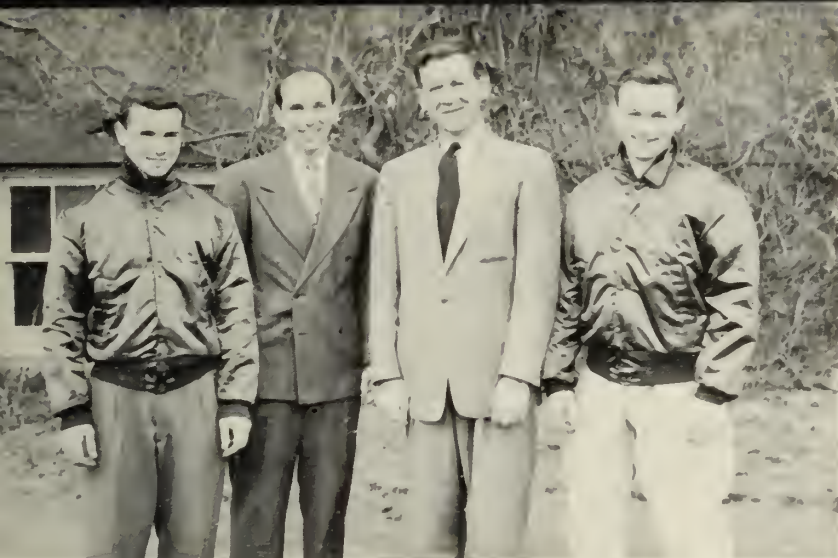
Recognize anybody?

The Yearbook Record Hop was held at the Stoneham Town Hall on December 29, 1953, with Bob Clayton as M. C. Popular singer, Bob Dini, and dancers from the Fred Astaire Studio were added attractions. The alumni, servicemen, and the whole high school turned out for an evening of enjoyment from eight to twelve. The entire proceeds from this dance helped to finance **THE TORCH**.



Remember me?





Co-captains George Pollock and Robert Mathewson  
Coach Robert Millett and Coach Chester Jordan

STONEHAM	vs.	LEAGUE OPPONENTS
2	Newton	2
1	Arlington	3
3	Medford	5
4	Ringe	2
0	Melrose	2
2	Cambridge Latin	4
1	Belmont	4

# HOCKEY

Leading the Stoneham sextet this year were Co-captains Bob Mathewson and George Pollock. Dick Bemis was goalie; Al Duff and Ralph Mitchell, wings on the first line; Phil Corbett and Lee Vogler, formidable defensemen. Other members of the team were Freddie Lorange, Joe Conley, Chuck Wayman, Bill Fitzgerald, Joe Muse, Dick Tartarini, and Jay Tufts. All hockey games were played at the Boston Arena — six Saturday afternoon games and four Friday night sessions. The round robin playoffs started January 30 and continued through February 13. Coach Bob Millett, Assistant Coach Chet Jordan, and the students were proud of Stoneham High hockey team.

Good save, Dick!



It's a tussle



A close one!





**SENIOR RECRUITS:** *First row* — M. Hanford, J. Flor, G. Griffin, P. Duffy, D. Barney, N. Scammon, M. Buckley, S. MacKay, M. L. Gigante. *Second row* — Coach Vera Lawson, J. Ezekian, N. Jenkins, F. Hurlburt, B. Flynn, J. Morin, J. Griffin, P. Simmons, M. Darling, L. McCarthy, Coach Topham. *Third row* — B. Viera, J. Hanson, C. Holohan, R. Ricks, C. Seaver, S. Wardwell, N. Devlin, C. Peacock, C. Carbone, D. Eramo.

## GIRLS BASKETBALL



S-t-r-e-t-c-h

Center passed to right forward; she passed back to center who relayed to left forward; she made a jump; the hall was up, up; and the ball was in! Yes, excitement was high at the annual tournament for sophomore, junior, and senior teams, the final event of the basketball season. The interclass rivalry was expressed in colorful uniforms, marching routines, original songs, and competitive basketball.



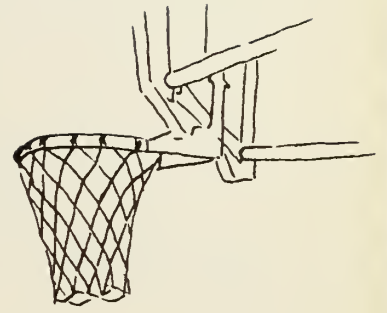




**VARSITY SQUAD:** *First row* — M. Salera, C. Patterson, Co-Captain J. Dixon, Co-Captain R. Steele, L. Saunders, J. Lawrence. *Second row* — D. Sheets, T. Walsh, P. Balough, W. Berry, R. Testa, J. Hickey

# BOYS BASKETBALL

In late November more than forty boys turned out for Coach Karl Elerin's basketball squad. After some grueling practices and quick moving scrimmages, the team began shaping up. Joe Dixon and Dick Steele, the only starting seniors; Johnny Laurence, Larry Saunders and Mike Salera, juniors, made the starting quintet. Although pre-season hopes were high, the boys dropped their first five games. Later the Stoneham club played its speedy type of basketball.

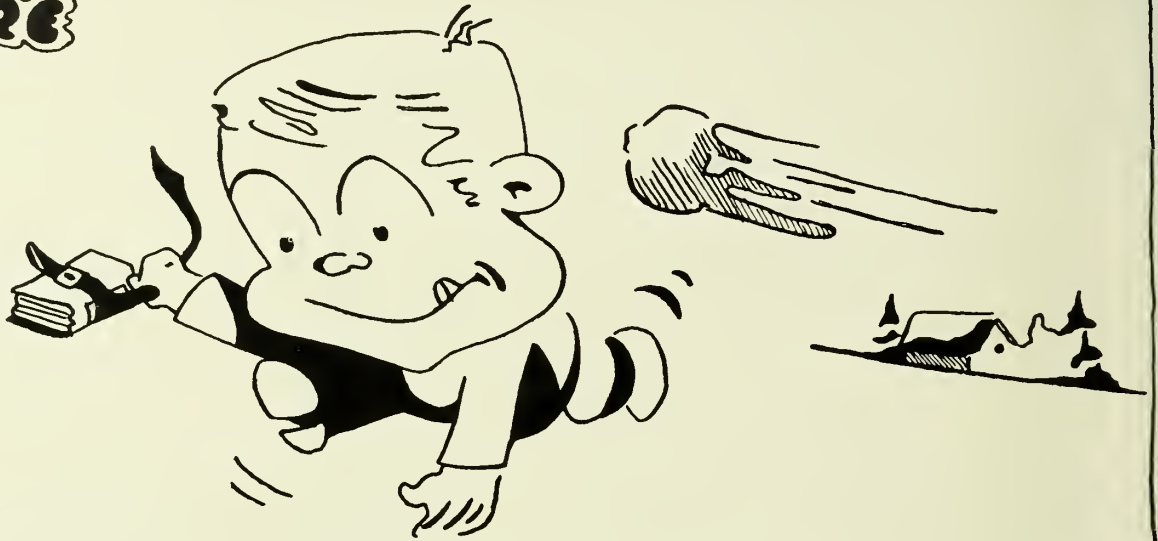


Dead-eyes, all

Practice game in gym



**BEFORE**



**W**HEN WINTER ROLLS AROUND EACH YEAR,  
IT IS A TIME WHEN THE SENIORS TAKE TIME TO

**LOOK BACK... AND LOOK AHEAD.**

**AFTER**





# 19 SPRING

54



F. NICHOLSON



**ORCHESTRA:** *First row* — S. Haseltine, J. Gilson, A. Coughlin, D. Chaput, P. Balough, L. Weiss. *Second row* — D. Gedney, S. Jenkins, M. Berry, B. Bacon, R. Rhindress, J. Lasselle, D. Stinson, D. Brule, F. Swendemen, P. Johnson, R. De Vivo

# SPRING

When Spring came, boys and girls sang about it at the annual Spring Concert. The combined glee clubs, with soloists and octets, sang romantically of the season. The strings of the orchestra played softly, and the woodwinds, spiced by the brasses, brought thoughts of approaching summer holidays. Then Mr. Todaro's military band delighted us with stirring marches. This was our concert for Spring, creating a symphony of musicians and expressing our young spirit.

**GIRLS' GLEE CLUB:** *First row* — McCarthy, Darling, Wilby, Hurlburt, Marks, Morabito, Angelosanto, Traverse, Flor, Bufters, Spooner, Treacy, Simmons, Meuse, Ezekian; *Second row* — Flynn, Heywood, Gigante, Doucette, Pulsifer, Buckley, Ferris, Owen, Killinger, McLaughlin, Chaput, Bowen, Urban, Saunders, Murphy, Griffin, Barney, Viera; *Third row* — Graham, Jenkins, Ewalt, Davis, Malone, Hooper, Mattsen, Duffy, Scammon, McCarthy, Boland, Carbone, Hanson, Holohan, Nuzzo, Burke, Marks, Le Blanc, MacKay, Hanford, Mrs. Gilda Whipperman; *Fourth row* — Bertwell, Griffin, Morin, Eramo, Peacock, Theide, Smith, Gedney, Thornton, Desmond, Johnson, Rafferty, Valleley, Bacon, Devlin, BenDavid, Seaver, Wardwell, Conroy, Hogan, Mac Cannell







**BOYS' GLEE CLUB:** *First row* — R. Heeter, J. Dixon, J. Robinson, T. Walsh, R. Tyler, R. Larson, D. Sheets; *Second row* — N. Donald, W. Fitzgerald, H. Bohling, W. McCarthy, J. Fleisher, R. Bemis, W. Spataro, Mr. Alfred Tadaro; *Third row* — D. Peacor, E. Thompson, A. Barker, R. Taylor, D. Nickerson, L. Vogler, T. Murphy

# CONCERT



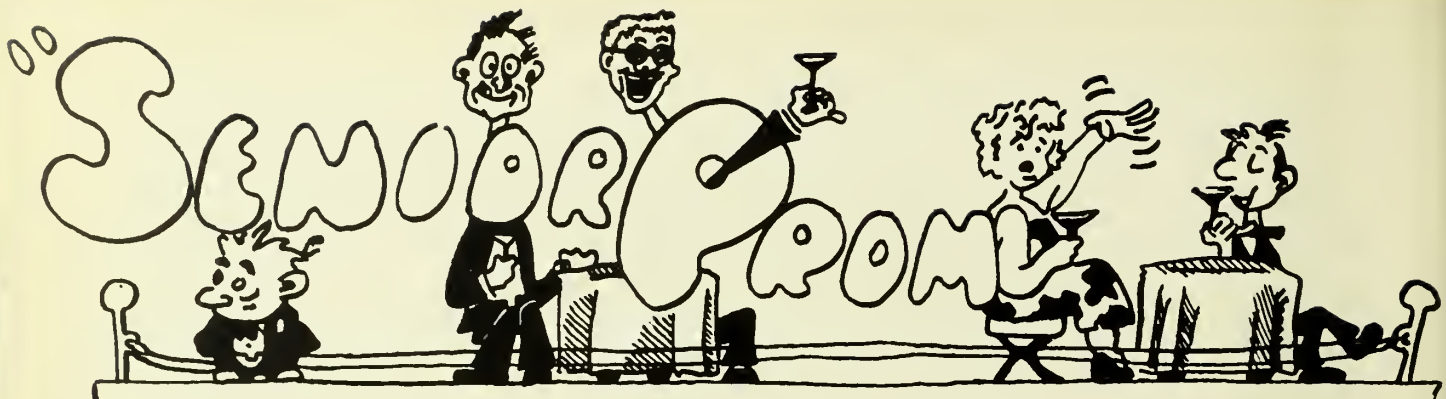
Rolland Tapley conducting

We feel honored to have as our school orchestra leader, Mr. Rolland Tapley, first violinist of the Boston Symphony Orchestra. Under his able direction, the orchestra this year, as always, gave an excellent performance at the Spring Concert.

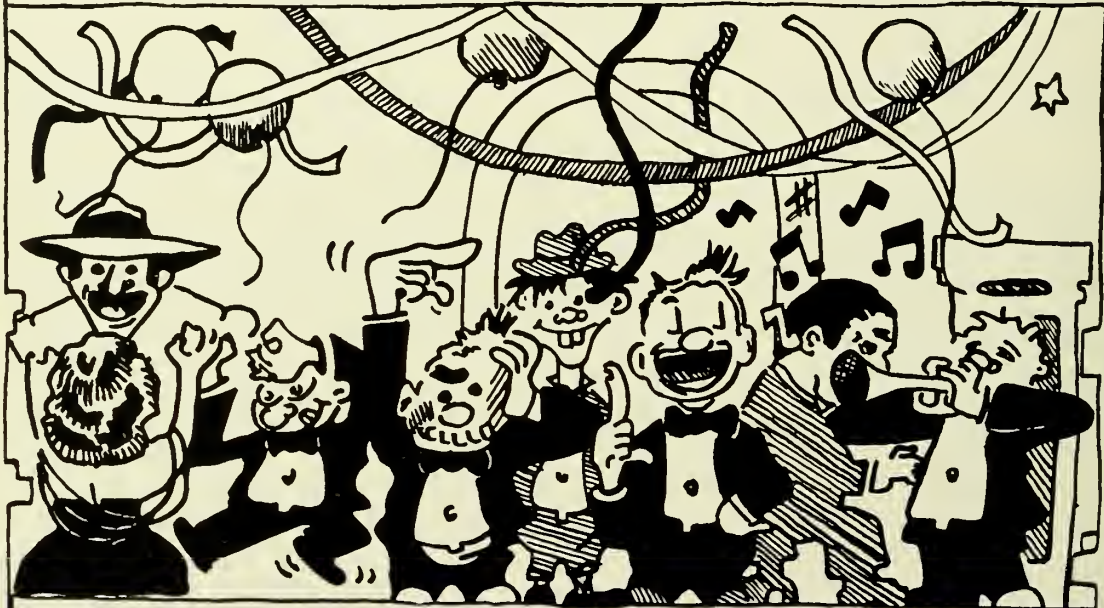
Under the influence of our gracious supervisor, Mrs. Gilda Wiperman, all students of Stoneham High School have developed an appreciation of music. She has discovered and encouraged those with unusual talent, written musical scores, and presented delightful programs for all occasions throughout the year



A gracious supervisor



F. NICHOLSON







*First row: C. Coughlin, R. Gummow, F. Lorance, D. Roberts, J. Bohling, R. Mathewson; Second row: Coach De Teso, Coach Mullins, H. Miller, J. Mulkin, W. Fitzgerald, R. Steeie, J. Lawrence, M. Salera, D. Symes, W. McLaughlin, H. Bohling; Third row: W. McDonough, D. Bishop, B. Dunlap, R. Davidson, J. Fleisher, D. Woodbury, J. Ruma, P. Farrell, D. Miles; Fourth row: D. Steele, E. Thompson, R. Vetromile, E. Cataldo, C. Patterson, T. Anderson, J. Hickey, D. Manning, R. Boyle.*

Safe at first!



# BASEBALL

Led by Co-captains Dick Steele and Red Fitzgerald, the Stoneham baseball team began to take shape in mid-March. Coach DeTeso held many practice games to develop a well-rounded team. Seniors who played this year were Ruma, Fleisher, Thompson, Woodbury, Lorance, Mathewson, and Sheets. Our capable manager, Herb Bohling, did a good job in looking after the interest of the Stoneham Nine in the Middlesex League games with Concord, Wakefield, Melrose, Belmont, Lexington, Winchester, and Reading.

Stealing home



Co-captains William Fitzgerald and Richard Steele with Coach De Teso.



Batter up!







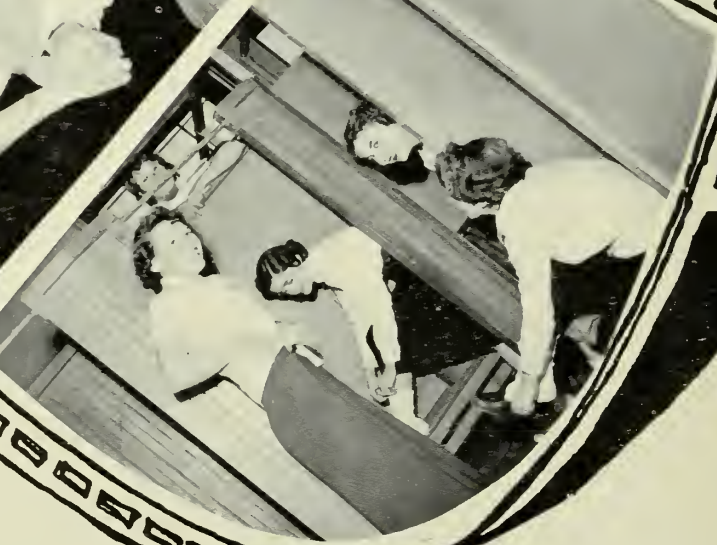
Red directs spring traffic!



A goodly crowd on a balmy spring evening



Judy, the jewel that Herb treasures



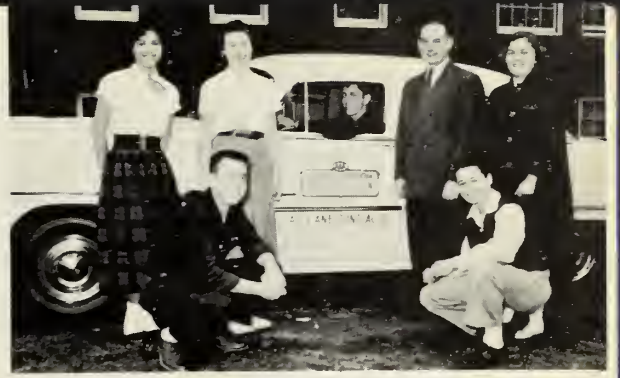
Hurry! There's the bell!



Joan Hanson preoccupied with props and Torch pictures



# This Is — Photo-Rama!



Of course they passed the road test!

Spring cleaning



The cafeteria line



Bob Heeter's rendition of  
"Oh, What a Wonderful Day"







**SOPHOMORE HOMEROOM 7:** Mrs. Marshall; *First Row* — Conroy, Desmond, Basile, O'Keefe, Skeffington, Farrell; *Second Row* — Deacon, Grassia, McCullough, Powers, Crosby, Zaccone; *Third Row* — Haskell, McDermott, Dudley, Treacy, French; *Fourth Row* — Hooper, LeBlanc, Rostrum, Coughlin, Smith; *Fifth Row* — Jones, Muse, Schlingman, Truesdale, Symes.

# SOPHOMORE



**SOPHOMORE HOMEROOM 4** — Miss Regish; *First Row* — Chambers, Forbes, Leith, Connors, Sweet; *Second Row* — Clarke, French, MacIntire, Roberts, Sweet; *Third Row* — Frazier, Brown, Mullen, Rotondo, Symes; *Fourth Row* — Gedney, Murcel, Seibert, Thomas; *Fifth Row* — Hertach, Pignato, Blue, Warman; *Sixth Row* — LaVallee, Plumer, Croft; *Seventh Row* — Barrett

**SOPHOMORE HOMEROOM 8** — Mr. Herrick; *First Row* — Arnold, Barnstead, Mitchell, Brown, Pendleton; *Second Row* — Carroll, Connearney, Dexter, Ewell, Gilmartin; *Third Row* — Greel, Hart, Hart, Hoye, Jandris; *Fourth Row* — MacDonald, Mellwraith, Meenan; *Fifth Row* — Richardson, Stone







**SOPHOMORE HOME ROOM 7A; Mr. Bates:** *First Row* — Drown, McDonough, Traverse; *Second Row* — Nickerson, Ranlett, Lamb, Sullivan; *Third Row* — Rice, Lamprey, Miller, Jackson; *Fourth Row* — Kenson, Pettis, Radford, Rafferty; *Fifth Row* — Landry, Vayo, Corbett, Dukeshire; *Sixth Row* — Adams, Apalakis, Zaltman, Mauceri; *Seventh Row* — Berry, Gummow, Gile, Coughlin; *Eighth Row* — Nowell, Indelicato, Summer; *Ninth Row* — Steele

# CLASSES

We sophomores feel very happy about our first year in the Stoneham High School. We started our year with a bang when we elected our class officers: *president*, Gerald Zaltman; *vice-president*, Barbara Landry; *secretary*, Ann Landry; *treasurer*, Diane McCullough; and *co-chairmen of the social committee*, Bette Mitchell and John MacDonald. We were very proud of our first dance, the "Varsity Drag" with a real orchestra! Yes, our first year in the high school was an exciting one because of our participation in sports and our anticipation of being the first class to graduate from the new high school!



**SOPHOMORE CLASS OFFICERS:** *President*, G. Zaltman; *Vice President*, B. Landry; *Secretary*, A. Landry; *Treasurer*, D. McCullough; *Co-chairmen Social Committee*, J. MacDonald, B. Mitchell; *Adviser* — E. B. Carrier



**SOPHOMORE HOMEROOM 3; Mr. Richardson:** *First Row* — Williams, Tiberio, Tartarini, Souza; *Second Row* — Savard, Arnall, Roach, Rivers, Richmond, Perrins, Patti; *Third Row* — Newton, Murley, DiMartino, Manning, Maglione, LeBlanc, Milne; *Fourth Row* — Lamb, Kustra, Lamb, Harrison, Egan, Donovan; *Fifth Row* — Chase, Cataldo, Cain, Biggio, Berry, Bastow





**JUNIOR OFFICERS:** *President, J. Lawrence; Vice President, L. Saunders; Secretary, J. San-Angelo; Treasurer, B. Prive; Chairmen of Social Committee, M. Adams, L. Weiss; Adviser, Mr. Chester Jordan.*



**JUNIOR HOMEROOM 14 — Mr. Millett:** *First Row — Graham, Erickson, Mense, Testa, Smith, Mr. Millett; Second Row — Berry, Ainsworth, Swadel, Giordani, Morrison, Wells; Third Row — Batchelder, Klamans, Hedman, Tufts, Coughlin, Merrithew; Fourth Row — Cronin, Lambert, Andersen, McKie, Conley; Fifth Row — O'Toole, Brandt, Bracciotti, Keenan.*



**JUNIOR HOMEROOM 13A — Miss Finn:** *First Row — Paquette, Ayer, McLaughlin; Second Row — Richardson, Adams, Cornu, Wittaker; Third Row — Jenkins, Gilson, San Angelo, O'Keefe; Fourth Row — Ransey, Gianette, Bohling, Hines; Fifth Row — Fionda, Johnson, Hickey, Willett; Sixth Row — Jandris, Messina, Laurence, Patterson; Seventh Row — McCharles, Boyle, Neiss; Eighth Row — Cruppi, Bulpett.*

# JUNIORS

We are the talented juniors, the class of '55. Not only do we have class athletes like Mike Salera, John Lawrence, Larry Saunders, Bob Vetromile, George Pollock, and "Gussie" Fionda, whom the whole school cheers, but we have budding lawyers, missionaries, teachers, business tycoons, radio technicians, and — oh — many other potential successes. Ambition is our middle name. Once in a while, during the year, we became lax, but thanks to the excellent leadership of our class officers, we were always able to accomplish our plans. This year, a busy one, was marked by our class dance and by the Junior-Senior Prom. We shall remember all our junior year activities for a long time to come.



**JUNIOR HOMEROOM 15 — Mr. Carrier:** *First Row — Baldwin, Squires, Morrow, Watkins, Harrigan; Second Row — Kelsen, Griffen, Karlson, Rouillard, Malinski, Mr. Carrier; Third Row — Brewer, Olsen, Clark, Berry, Fionda; Fourth Row — Smith, Smith, Lanzetts, Gallella, MacDonald; Fifth Row — Gedney, Kyle, Naimo, Eells; Sixth Row — Ingalls, Mahoney.*

**JUNIOR HOMEROOM 11 — Mr. Fawcett:** *First Row — Davidson, Grose, Lanza, Richardson; Second Row — Barker, Fink, Hefferman, Maidrand, Murphy, Woods; Third Row — Blue, Finnegan, Hibbins, McCarthy, Muse, Naimo; Fourth Row — Vilasi, Burke, Theide, Kendell, McGrath, Nagle; Fifth Row — Corbett, Foley, Kirkland, Meisner.*



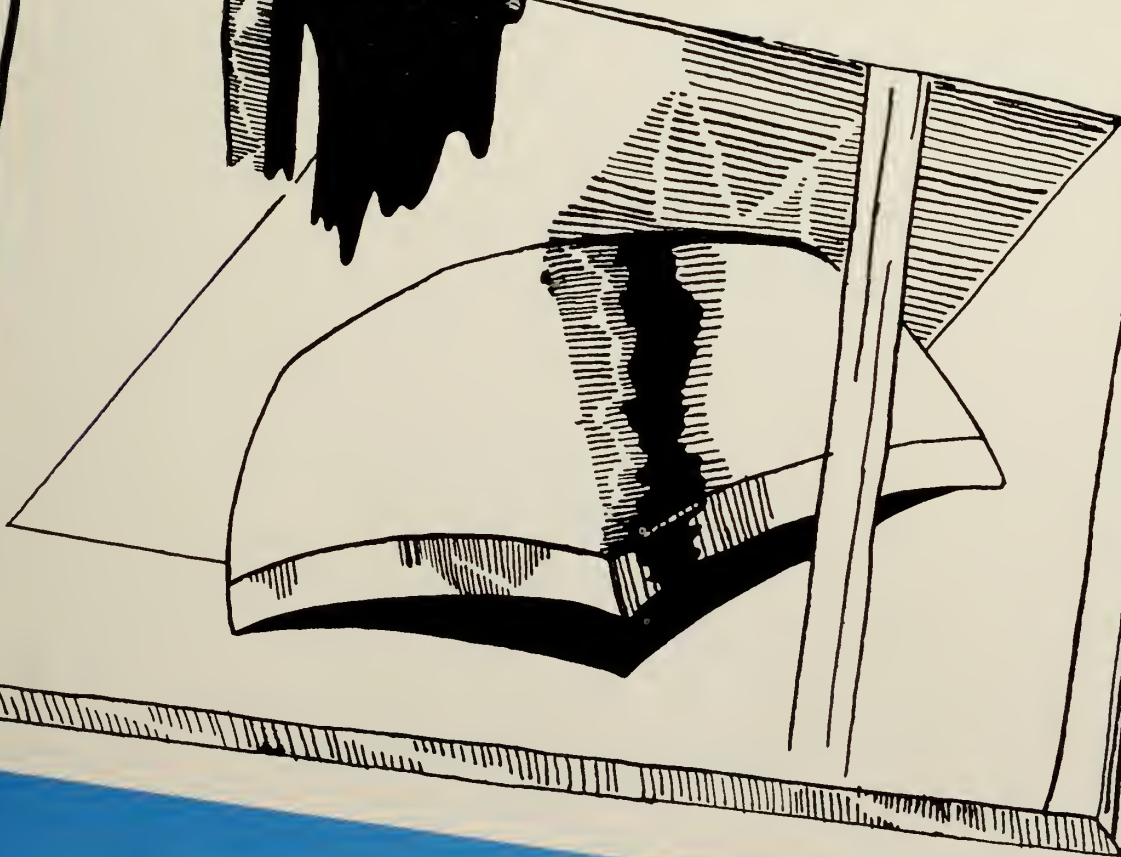


79

# SUMMER

58

# SENIORS



F. NICHOLSON

# SENIOR HONORS

## MacDonald Medals

For Scholarship, character, and good influence in the school

Carol Ann Peacock

Russell Melvin Tyler

Class History — Joan Martha Hanson

Graduation Address — Fonald LaCroix Simons

### Preliminary Honor Group

(B average or higher for four years)

Joan Martha Hanson

Carol Ann Peacock

Marilyn Carol Mattsen

Donald Peacor

Marilyn Marie Meuse

Donald LaCroix Simons

Edward H. Pawuette

Russell Melvin Tyler

Class Will — Dorothy Heywood, Thomas Walsh

Class Will — Dorothy Heywood, Thomas Walsh

Class Prophecy — Edward Thompson

The following awards and prizes will be announced at graduation exercises

History Medal

Mathematics and Science Medal

Carrie S. Ireland Citizenship Award

American Legion Medal

Grange Art Prize

Grange Music Prize

Stoneham High School Music Prize

Parent-Teacher Scholarship

Teachers' Club Scholarship

Blue and White Scholarship

Boosters' Club Scholarship

Woman's Club Scholarship

Annie Bailey Trowbridge Scholarship

### Graduation Committee

Herbert Eugene Bohling

Donald Peacor

Carole Joan Carbone

Rosemary Ricks

John C. Fleisher, Jr.

Nancy Ellen Scammon

John P. Griffin, Jr.

Carolyn Ruth Seaver

Marilyn Marie Meuse

Edward V. Thompson

Edward H. Paquette

David E. Woodbury





## **Senior Officers**

**PRESIDENT:** James Ruma  
**VICE PRESIDENT:** Richard Steele  
**SECRETARY:** Martha Darling  
**TREASURER:** Sandra Wardwell

**CO-CHAIRMEN SOCIAL COMMITTEE:**  
Bette Flynn, Edward Thompson

**ADVISERS:**  
Mrs. Vera Curley, Mr. Earle Thibodeau

**MARGARET ANGELOSANTO**  
*Her ways are ways of pleasantness.*  
 "Hi, doll" . . . Peggy . . . winning smile

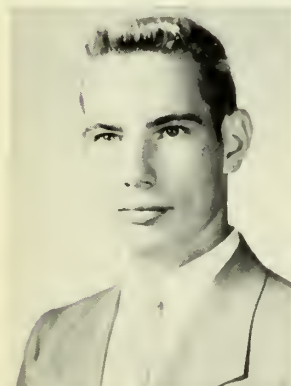
Traffic Squad 2; Blue and White 1, 2; A. A. 1, 2, 3; Homeroom Officer 1, Yearbook Staff; Senior Play Ticket Chairman; Glee Club 1, 2, 3; Basketball 3; Chairman Typing Staff

**MERRILYN BACON**  
*A sunny nature wins lasting friends.*  
 Bunnie . . . Jimmy . . . sincere  
 Blue and White 1, 2; A. A. 1, 2, 3;  
 Homeroom Officer 1, 2, 3; Glee Club 1, 2, 3



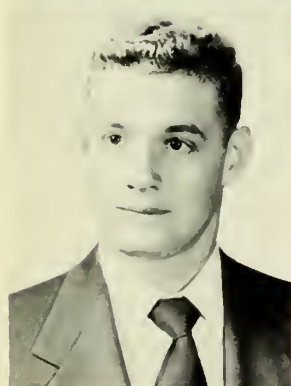
**ALFRED BARKER**  
*I'm not so shy as I look.*  
 Buzz . . . likable . . . worth-while  
 Blue and White 1, 2; A. A. 1, 2, 3;  
 Football 1; Senior Play; Glee Club 1, 2, 3

**DORIS BARNEY**  
*The life of Riley is the life for me.*  
 Talkative eyes . . . jolly . . . good sport  
 Basketball 1, 2, 3; Field Hockey 1, 2, Captain 3; Blue and White 1, 2; A. A. 1, 2, Secretary 3; Homeroom Officer 1, 3; Glee Club 1, 2, 3



**RICHARD BEMIS**  
*A good sport is sure to win.*  
 "It's fixed" . . . hockey fan . . . alibis  
 Football 1; Hockey 1, 2, 3;  
 Blue and White 1, 2; Student Council 1; A. A. 1, 2, 3; Homeroom Officer 1, 2; Glee Club 1, 2, 3

**ADELINE BEN DAVID**  
*Look at her and you will see what good young ladies ought to be.*  
 Stretch . . . artist . . . pleasant  
 Blue and White 1, 3; A. A. 2, 3;  
 Homeroom Officer 3; Yearbook Staff; Glee Club 2, 3



**PETER BERRINI**  
*To know him well is to like him better.*  
 Popular . . . thoughtful . . . All-American  
 Football 1, 2; Captain 3; Traffic Squad 2, 3; Blue and White 1, 2; Class Vice President 1, 2; Social Committee 2, 3; Student Council 1, 2; Homeroom Officer 1, 2, 3; Senior Play Committee; Head Usher at Graduation; Boys' State Representative

**JUDITH BERTWELL**  
*Good things come in small packages.*  
 Judy . . . "Blondie" . . . dancing  
 Basketball 1; Field Hockey 1; Blue and White 1, 2, 3; A. A. 1, 2, 3; Homeroom Officer 1; Glee Club 1, 2, 3



**HERBERT BOHLING**  
*A dramatic touch, a witty word.*  
 Judy . . . future scientist . . . actor  
 Traffic Squad 1; Blue and White 1, 2; A. A. 1, 2, 3; Senior Play; Glee Club 1, 2, 3

**JEAN BOLAND**  
*A sunny nature wins many friends.*  
 Laughter . . . jokes . . . carefree  
 Field Hockey 1; Blue and White 1, 2; A. A. 1, 2, 3; Senior Play Usher; Glee Club 1, 2, 3



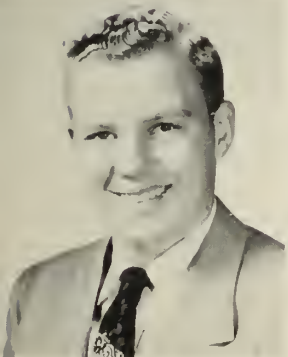


**JUDITH BOWEN**

*A willing worker.*  
Vivacious . . . poised . . . pleasant  
Blue and White 2; A. A. 1, 2, 3;  
Senior Play Committee

**ROBERT BREAGY**

*To know him is to like him better.*  
Bob . . . "It's a man's world" . . .  
First National  
Blue and White 1, 2; A. A. 1, 2, 3;  
Homeroom Officer 1, 2; Glee  
Club 1, 2, 3



**RICHARD BROWN**

*Easy to know and easier to get along  
with.*  
Curly . . . quiet . . . good natured  
Blue and White 1, 2; A. A. 1, 2,  
3; Yearbook Staff; Senior Play

**MAUREEN BUCKLEY**

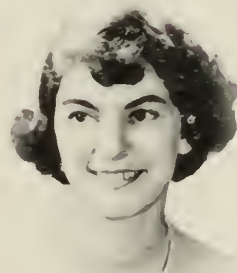
*Good natured, good sport, and full  
of fun.*  
Bucky . . . dancing . . . dependable  
Basketball 1, 2, 3; Field Hockey  
1, 2, 3; Blue and White 1, 2; A. A.  
1, 2, 3; Glee Club 1, 2, 3

**MARGARET BURKE**

*Quietly she makes her presence felt.*  
Margie . . . petite . . . calm  
Blue and White 1, 2; A. A. 1, 2,  
3; Glee Club 1, 2, 3

**CAROL BUTTERS**

*Was I ever embarrassed!*  
"Dance tonight?" . . . history . . .  
fun-loving  
Blue and White 1, 2; A. A. 1, 2, 3;  
Glee Club 1, 2, 3



**ROBERT CAMPBELL**

*Quiet and shy, but quite the guy!*  
Comedian . . . cartoonist . . . "Cam"  
Blue and White 1, 2; A. A. 1, 2, 3;  
Student Council 3; Senior Play  
Committee

**CAROLE CARBONE**

*She gives her best to every task.*  
Energetic . . . Mrs. Massoula . . .  
friendly  
Basketball 1, 2, 3; Field Hockey  
1, 2, Captain 3; Blue and White  
1, 2; Social Committee 1, 2; Student  
Council 3; Yearbook Staff; Senior  
Play; Glee Club 1, 2, 3; A. A. 1, 2;  
Vice President 3; Softball 1, 2;  
Majorette 3



**DOROTHY CHAPUT**

*Silence is golden.*  
Musical . . . unhurried . . . gentle  
Blue and White 1, 2; A. A. 1, 2, 3;  
Field Hockey 1, 2, 3; Glee Club  
1, 2, 3; Orchestra 1, 2, 3; Band 1, 2, 3

**ARTHUR COLE**

*Every day's a holiday.*  
Unperturbed . . . "Why work?"  
good friend  
Blue and White 1, 2; A. A. 1, 2, 3;  
Glee Club 1; Basketball 1; Traffic  
Squad 1





**MARY LOU CONROY**

*Hospitality from sunset to sunrise.*  
Natural curls . . . persevering . . . Paul

Blue and White 1, 2; A. A. 2, 3;  
Glee Club 1, 2, 3; Senior Play Usher

**MARTHA DARLING**

*A little nonsense now and then.*  
Lighthearted . . . roguish . . . refreshing.

Blue and White 1, 2; Basketball 1, 2, 3; Cheering Squad 2, 3; Student Council 3; Class Secretary 3; Homeroom Officer 3; Usher at Graduation 2; Senior Play Committee 1; Glee Club 1, 2, 3; A. A. 1, 2, 3; Carnival Ball Usher 1; Carnival Ball Attendant 2, 3



**MARGARET DAVIS**

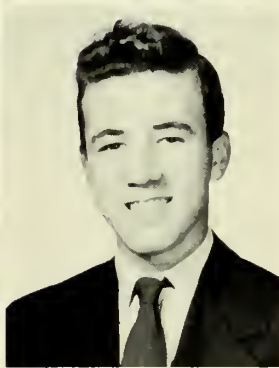
*It's nice to be natural when you're naturally nice.*

Peggy . . . those eyes . . . gracious.  
A. A. 3; Glee Club 2, 3; Senior Play Usher

**ROSE DESMOND**

*Happy I am; from care I'm free.*  
Demure . . . wrong again . . . fast talker

Blue and White 2; A. A. 3; Glee Club 3



**NANCY DEVLIN**

*Sailing through the sea of life.*

Sailor . . . good sport . . . sbutterbug

Basketball 1, 2, 3; Field Hockey 1, 2, 3; Traffic Squad 2, 3; Blue and White 1, 2; Homeroom Officer 1; Glee Club 1, 2, 3; A. A. 1, 2, 3; Chairman Social Committee 2; Girls' State Representative; Senior Play; Yearbook Staff

**JOHN DIRKMAN**

*Try to find a better friend.*

Jack . . . responsible . . . reticent

A. A. 1, 2, 3; Blue and White 1, 2; Glee Club 1, 2, 3

**NORMAN DONALD**

*Waiting for a little devilry.*

Carefree . . . speedy . . . comedian

Blue and White 1, 2; A. A. 1, 2, 3; Glee Club 1, 2, 3

**IRENE DOUCETTE**

*A lot of fun for everyone.*

Courteous . . . efficient . . . kindly.

Basketball 1, 2, 3; Field Hockey 1; Blue and White 1, 2; Homeroom Officer 1; Glee Club 1, 2, 3; Senior Play Committee

**ALBERT DUFF**

*Pleasure first and business after.*

Allie . . . clown . . . mischief

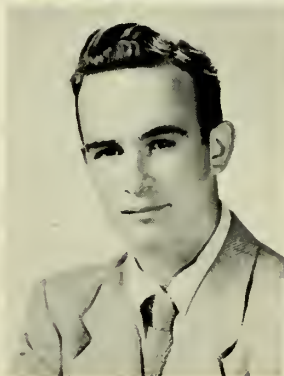
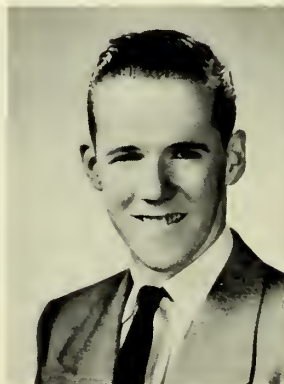
Hockey 3; Blue and White 1, 2; A. A. 1, 2, 3; Homeroom Officer 2; Glee Club 1, 2, 3

**PEGGY ANN DUFFY**

*Cute, popular, full of fun, loved by each and everyone.*

Star . . . beautiful smile . . . the bride

A. A. 1, 2, 3; Homeroom Officer 1, 2, 3; Social Committee 2; Yearbook Staff; Glee Club 1, 2, 3; Head Usher at Graduation; Senior Play; Basketball 2; Majorette 3; Winter Carnival Attendant 3





**WILLIAM EMERY**

*It's a man's world.*

"Bill" . . . deep voice . . . electrical engineer

Football 3; Blue and White 1, 2; A. A. 1, 2, 3; Homeroom Officer 3; Yearbook Staff; Senior Play Committee; Glee Club 1, 2, 3

**DONNA ERAMO**

*Nothing is impossible to a willing heart.*

Ambitious . . . pizza . . . vivacious  
Basketball 1, 2, 3; Field Hockey 1, 2, 3; Cheering Squad 2, 3; Blue and White 1, 2; Social Committee 1, 2; Student Council 1; A. A. 1, 2, 3; Glee Club 1, 2, 3; Homeroom Officer 3; Usher at Senior Play 1; Winter Carnival Attendant 3



**FAYE EWALT**

*The gentle mind by gentle deeds is known.*

Considerate . . . loyal . . . a friend to keep

Blue and White 1, 2, 3; A. A. 1, 2, 3; Homeroom Officer 2; Glee Club 1, 2, 3

**JOYCE EZEKIAN**

*A sunny nature wins friendship everywhere.*

Algebra . . . "Shorty" . . . Reading  
Basketball 1; Field Hockey 1; Traffic Squad 2; Blue and White 1, 2; A. A. 1, 2, 3; Homeroom Officer 1; Glee Club 1, 2, 3; Majorette 3; Senior Play Committee; Yearbook Staff



**CAROLYN FERRIS**

*Always on the sunny side of the street.*

Joyous . . . typing whiz . . . driver's license

A. A. 2, 3; Glee Club 2, 3; Senior Play Committee

**WILLIAM FITZGERALD**

*He has a friend for every smile and a smile for every friend.*

Popular . . . convertible . . . "Red"  
Hockey 1, 3; Baseball 1, 2, Captain 3; Traffic Squad 2, 3; Senior Play; Usher at Graduation 2; Glee Club 1, 2, 3



**JOHN FLEISHER**

*The melody lingers on.*

Big Jawn . . . talented . . . reliable

Football 2, 3; Baseball 1, 2, 3; Basketball 1; Blue and White 1, 2; A. A. 1, 2, 3; Yearbook Staff; Homeroom Officer 3; Usher at Graduation 2; Senior Play Committee; Glee Club 1, 2, 3

**JANE FLOR**

*A girl of infectious humor and magnetic personality.*

Donnie . . . happy and helpful . . . spirited

Softball 1, 2; Basketball 1, 2, 3; Blue and White 1, 2; Student Council 1; A. A. 1, 2, 3; Homeroom Officer 1, 2; Yearbook Staff; Usher at Senior Play; Glee Club 1, 2, 3; Usher at Carnival Ball 3



**BETTY JEAN FLYNN**

*Cheerful, snappy and always happy.*

Babydoll . . . perfect lady . . . giggler

Basketball 1, 3; Field Hockey 1; Cheering Squad 3; Blue and White 1, 2; Student Council Secretary 3; A. A. 1, 2, 3; Chairman Social Committee 1, 3; Homeroom Officer 2; Usher at Senior Play; Glee Club 1, 2, 3; Majorette 2; Winter Carnival Queen

**DAVID GEBOW**

*His good nature is without an end.*

Friendly newcomer . . . affable . . . sincere

Glee Club 3; A. A. 3



**PRISCILLA GEDNEY**

*A girl with an appealing smile; her line of pals extends a mile. Cilla . . . quiet . . . dependable*

Field Hockey, Assistant Manager 3; Blue and White 1, 2; Student Council 1; A. A. 1, 2, 3; Usher at Senior Play; Glee Club 1, 2, 3; Band 2, 3; Usher at Carnival Ball

**MARY LOU GIGANTE**

*Sometimes grave, sometimes gay but we like her every way.*

"Give a yell!" . . . poise . . . personality

Cheering Squad 2, Captain 3; Traffic Squad 2, 3; Blue and White 1, 2; Student Council 1, 2, Vice President 3; A. A. 1, 2, 3, Treasurer 1; Usher at Graduation 2; Glee Club 1, 2, 3; Senior Play Committee; Winter Carnival Attendant 3



**JOHN GILLIS**

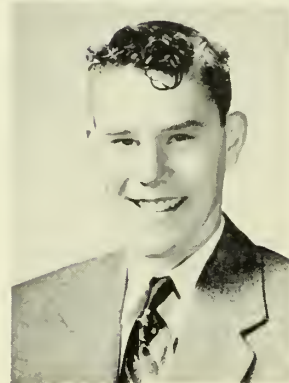
*Laughing eyes, a friendly smile comprise a friend worth while. "Gill" . . . pharmacist . . . intelligent*

Traffic Squad 1, 2, 3; Blue and White 1, 2; A. A. 1, 2, 3; Homeroom Officer 1; Glee Club 1, 2

**JEAN GRAHAM**

*For she is blithe and she is cheery. Likable . . . unassuming . . . happy-go-lucky*

Glee Club 1, 2, 3



**JUDITH GRIFFIN**

*The will that finds a way.*

"Know what?" . . . quiet . . . faithful.

Basketball 1, 2, 3; Field Hockey 1, 2, 3; Blue and White 1, 2; A. A. 1, 2, 3; Usher at Senior Play; Glee Club 1, 2, 3; Orchestra 1; Band 1, 2, 3

**GERALDINE GRIFFIN**

*Happy today with no care of tomorrow. Gerry . . . spirited secretary . . . dancing*

Basketball 1, 2, 3; Cheering Squad 2, 3; Blue and White 1, 2; A. A. 1, 2, 3; Homeroom Officer 2; Glee Club 1, 2, 3; Winter Carnival Attendant 3



**PAUL GRIFFIN**

*Ambition and hard work are the fore-runners of success.*

"Ahoy, matey!" . . . polite . . . popular

Football 1, 2, 3; Baseball 1, 2; Basketball 1, 2; Blue and White 1, 2; Student Council 2; A. A. 1, 2, 3; Homeroom Officer 1, 2, 3; Usher at Graduation 2; Senior Play Committee 1; Glee Club 1, 2, 3

**MARTHA HANFORD**

*She may be quiet and demure; maybe — don't be too sure.*

Blondie . . . well-groomed . . . George

Basketball 1, 2, 3; Social Committee 2; Field Hockey 1, 2, 3; Blue and White 1, 2; A. A. 1, 2, 3; Homeroom Officer 1; Senior Play Committee; Glee Club 1, 2, 3



**JOAN HANSON**

*'Tis virtue that makes us noble.*

Attractive . . . dependable . . . admirable

Basketball 1, 2, 3; Field Hockey 1, 2, 3; Blue and White 1, 2; A. A. 1, 2, 3; Social Committee 2; Homeroom Officer 2; Yearbook Staff; Glee Club 1, 2, 3; Majorette 3

**STEPHEN HASEKTINE**

*It is good to make a jest.*

"Josh" . . . slide rule . . . irrepressible

Hockey 3; Baseball 2; A. A. 1, 2, 3; Senior Play Committee; Glee Club 1, 2, 3; Orchestra 1, 2, 3





**ROBERT HEERTER**

*He lives, he laughs, and is very happy.*

Bob . . . seldom in a hurry . . . good natured

Football 1; Basketball 1; A. A. 1, 2, 3; Homeroom Officer 1, 2; Glee Club 1, 2, 3



**DOROTHY HEYWOOD**

*Many a male heart flutters.*

Popular . . . charming . . . pianist

Blue and White 1, 2; Student Council 2; A. A. 1, 2, 3; Homeroom Officer 1, 3; Usher at Senior Play 1; Glee Club 1, 2, 3; Majorette 1, 2, Subhead 3; Winter Carnival Attendant 2, 3



**CAROL HOGAN**

*She was made for happy thoughts, for playful wit and laughter.*

Another card? . . . attractive . . . always late

Field Hockey 2; Basketball 3; Blue and White 1, 2; A. A. 1, 2, 3; Homeroom Officer 1; Glee Club 1, 2, 3



**CAROL HOLOIHAN**

*Kindness, her golden charm.*

Candy girl . . . good friend . . . pensive

Basketball 1, 2, 3; Assistant Manager Field Hockey 1; Blue and White 1, 2; Student Council 1, 2; A. A. 1, 2, 3; Chairman of Social Committee 1; Glee Club 1, 2, 3; Prompter Senior Play

**KATHRYN HOOPER**

*A joyful laugh is like sunshine. Life of the party . . . Mrs. Pulitski . . . affable*

Blue and White 1, 2; A. A. 1, 2, 3; Senior Play 1; Glee Club 1, 2, 3

**FLORENCE HURLBURT**

*Her voice was ever soft, gentle, and low.*

Flo . . . petite . . . dancer

Basketball 1; Field Hockey 1; Blue and White 1, 2; A. A. 1, 2; Homeroom Officer 1, 2; Glee Club 1, 2, 3



**NANCY JENKINS**

*Little and neat, and also sweet. Tiny . . . amiable . . . well-dressed*

Basketball 1, 2, 3; Field Hockey 1, 2, 3; Social Committee 2; Blue and White 1, 2; A. A. 1, 2, 3; Senior Play Publicity Committee 3; Glee Club 1, 2, 3

**BARBARA JOHNSON**

*Good worker, good sport, good friend.*

Main attraction at Pullo's Drug Store . . . willing . . . helpful

Blue and White 1, 2; A. A. 1, 2, 3; Senior Play Committee 1; Majorette 1, 2; Glee Club 1, 2, 3



**GAIL KILLINGER**

*Life is just one big holiday.*

Talkative . . . bustling . . . friendly

Basketball 1; Field Hockey 1; Blue and White 1, 2; A. A. 1, 2, 3; Homeroom Officer 1; Band 2; Glee Club 1, 2, 3

**PAULINE KINSELLA**

*A merry maid is she.*

Littleton, N. H. transfer . . . polite . . . genial

Glee Club 3





**RALPH LARSON**

*Laughter and common sense, a rare combination.*

Sincerity . . . "Still waters" . . . reliable

Baseball 2; Blue and White 1, 2; A. A. 1, 2, 3; Glee Club 1, 2, 3; Yearbook

**JANET Le BLANC**

*Quietly she goes her way, does her share with little to say.*

Reserved . . . 3D . . . faithful  
Blue and White 1, 2; A. A. 1, 2, 3; Glee Club 1, 2, 3



**FREDERICK LORANCE**

*He is the happy kind whose nature never worries.*

"Freddy" . . . hockey . . . "Don't be bitter!"

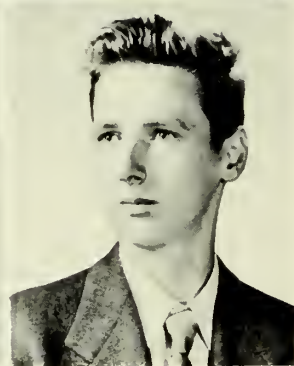
Football 1; Hockey 1, 2, 3; Baseball 1, 2, 3; Blue and White 1, 2; A. A. 1, 2, 3; Homeroom Officer 1; Glee Club 1, 2, 3

**ALFRED LUPPI**

*Good will paves my path.*

Wayne . . . Reading canteen . . . cooperative

Blue and White 1, 2; A. A. 1, 2, 3; Glee Club 1, 2, 3



**NANCY Mac CANNELL**

*She is sweet simplicity.*

Angelic . . . sweet smile . . . later!

Blue and White 1, 2; A. A. 1, 2, 3; Glee Club 1, 2, 3; Senior Play Publicity Committee; A. A. Aide 2, 3

**DAVID Mac DONALD**

*The things in life I like the best are lots of eats and lots of rest.*

"Mac" . . . spaghetti . . . scientist  
Blue and White 2; A. A. 2, 3; Glee Club 2, 3

**SANDRA Mac KAY**

*Small, but how dear to us.*

"It's in the plan" . . . sincere . . . "Sonny"

Basketball 1, 2, 3; Field Hockey 1, 2, 3; Blue and White 1, 2; A. A. 1, 2, 3; Homeroom Officer 1, 2; Glee Club 1, 2, 3; Social Committee 2; Senior Play Publicity Committee

**BETTY MALONE**

*They like her most; who know her best.*

An agreeable companion . . . quiet . . . affable

Blue and White 1, 2; Glee Club 1, 2, 3; A. A. 1, 2, 3

**MICHAEL MALONSON**

*A little bit of mischief done up in a small package.*

"Little Caesar" . . . parties . . . procrastinator

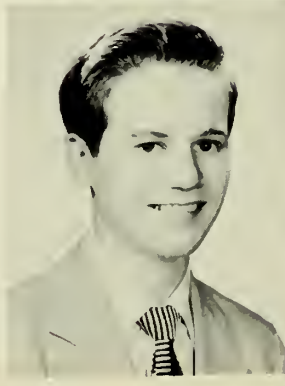
Baseball 1, 2, 3; A. A. 1, 2, 3; Homeroom Officer 1, 2, 3; Blue and White 1, 2; Co-Chairman Senior Play Ticket Committee

**JANET MARKS**

*She bubbles with wit and good humor.*

Buddy . . . witty . . . giggling

Basketball 1; Field Hockey 1, 2; Blue and White 1, 2; A. A. 1, 2, 3; Homeroom Officer 1; Glee Club 1, 2, 3





**LORETTA MARKS**

*To keep happy is all I try to do.*  
"Oh, bet it's a wedding present!"  
... Tony ... helpful

Blue and White 1, 2; Senior Play; Glee Club 1, 2, 3; A. A. 1, 2, 3; Usher at Carnival Ball 3

**ROBERT MATHEWSON**

*For he's a jolly good fellow.*  
"Matty" ... skating ... heart-breaker

Hockey 2; Captain 3; Baseball 1, 2, 3; Blue and White 1, 2; Student Council 3; A. A. 1, 2, 3; Band 1; Homeroom Officer 1, 2, 3



**MARILYN MATTSSEN**

*Her worth is warrant for her welcome.*  
Efficient secretary ... reliable ... cheerful

Blue and White 1, 2; A. A. 1, 2, 3; Homeroom Officer 1, 2, 3; Senior Play, Student Manager; Glee Club 1, 2, 3; Band 3

**CAROL McCARTHY**

*Oh! What mysteries those sparkling eyes conceal.*

School spirit ... Oh, that laugh! ... enthusiasm

Basketball 1, 2, 3; Field Hockey 1, 2; Cheering Squad 2, 3; Blue and White 1, 2; Student Council 1; A. A. 1, 2, 3; Class Secretary 1; Senior Play 1; Social Committee 1, 2; Homeroom Officer 1, 2; Glee Club 1, 2, 3; Usher at Carnival Ball 3



**LORETTA McCARTHY**

*Vivacious and small, well loved by all.*  
"Bundle of dynamite in a match box" ... little Mac ... sunny

Basketball 1, 2, 3; Field Hockey 1, 2, 3; Blue and White 1, 2; A. A. 1, 2, 3; Usher at Senior Play 1; Glee Club 1, 2, 3; Usher at Carnival Ball

**WILLIAM McCARTHY**

*There is mischief in his eyes.*  
Texan drawl ... witty ... "Red"

Glee Club 1, 2, 3; A. A. 1, 2, 3; Blue and White 1, 2; Yearbook Staff

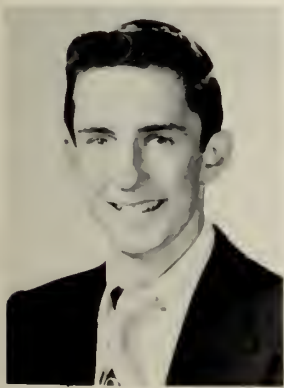


**MURRAY McCHARLES**

*My car is my weakness.*  
"Ray" ... mechanic ... hot rod  
Blue and White 1, 2; Band 1, 2; A. A. 1, 2, 3; Orchestra 1, 2, 3

**MARY McLAUGHLIN**

*She enjoys life in a quiet way.*  
Shy ... likable ... loyal  
Blue and White 1, 2; Glee Club 1, 2, 3; A. A. 1, 2, 3



**MARILYN MEUSE**

*She is the gentle, quiet kind.*  
Starlight 'dancing ... kindly ... proficient  
Blue and White 1, 2; A. A. 1, 2, 3; Homeroom Officer 2; Glee Club 1, 2, 3

**RALPH MITCHELL**

*Wit is the salt of conversation.*  
"Mitch" ... original ... unperturbed  
Hockey 1, 2, 3; Baseball 2, 3; Traffic Squad 1, 2; Blue and White 1, 2; Homeroom Officer 1; Glee Club 1, 2, 3



**FRANCES MORABITO**

*Music is the speech of the angels.*  
Typing speed demon . . . "Fran"  
. . . warm smile

Blue and White 1, 2; A. A. 1,  
2, 3; Glee Club 1, 2, 3

**JEANETTE MORIN**

*Never worry . . . never hurry*  
Small . . . trim . . . Sonny

Basketball 1, 2, 3; Blue and White  
1, 2; A. A. 1, 2, 3; Homeroom  
Officer 3; Glee Club 1, 2, 3; Social  
Committee 3; Class Statistician 3



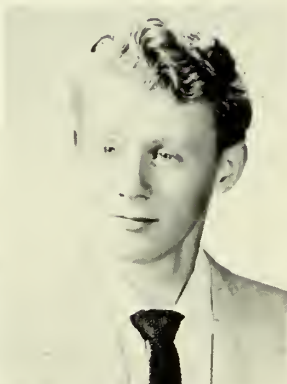
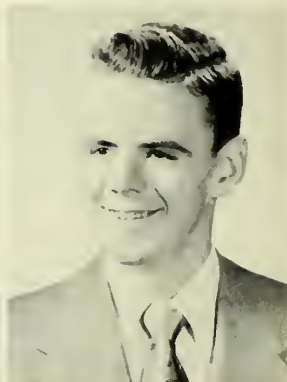
**JANET MURPHY**

*Friendly and thoughtful of others.*  
"Where's Irene?" . . . sweet . . .  
shorthand expert

Basketball 1, 2, 3; Glee Club  
1, 2, 3; Blue and White 1, 2; A. A.  
1, 2, 3; Senior Play Committee

**THOMAS MURPHY**

*A merry heart lives long*  
Mischievous . . . alibis . . . cartoonist  
Football 1, 2; Baseball 1, 2;  
Blue and White 1, 2; Student  
Council 1; A. A. 1, 2, 3; Homeroom  
Officer 1, 2; Glee Club 1, 2, 3;  
Senior Play Committee



**DAVID NEWCOMBE**

*Handsome is as handsome does.*  
Florida transfer . . . handsome . . .  
cheerful

A. A. 3; Homeroom Officer 3;  
Senior Play Committee

**FRANK NICHOLSON**

*The artist sees beauty everywhere*  
"Nick" . . . sharp clothes . . . records

Baseball 2, 3; Blue and White  
1, 2; A. A. 1, 2, 3; Yearbook Artist;  
Senior Play Committee; Glee Club  
1, 2, 3; Usher at Graduation



**DONALD NICKERSON**

*Never say more than is necessary.*  
Helpful . . . real friend . . . business  
man

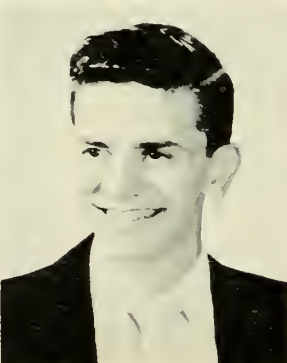
A. A. 1, 2, 3; Usher at Graduation  
2; Blue and White 1, 2; Glee Club  
1, 2, 3

**JEAN NUZZO**

*To be poised is to be rich with  
friendships.*

Dependable . . . good friend . . .  
courteous

Field Hockey 1; Blue and White  
1, 2; A. A. 1, 2, 3; Usher at Senior  
Play; Glee Club 1, 2, 3



**MARILYN OWEN**

*If music be the food of happiness,  
play on.*

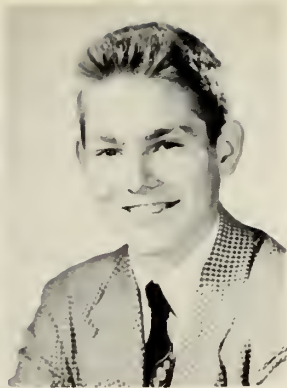
Unruffled . . . band . . . Lee  
Glee Club 1, 2, 3; Blue and White  
1, 2; A. A. 1, 2, 3; Band 1, 2, 3

**EDWARD PAQUETTE**

*I can resist anything but temptation.*  
Jazz . . . smooth . . . earnest

Blue and White 1, 2; A. A. 1, 2,  
3; Homeroom Officer 1; Glee Club  
1, 2, 3





**CAROL PEACOCK**

*She does all things well.*  
Intelligent and attractive too . . . versatile . . . friendly

Basketball 1, 2, 3; Field Hockey 1, 2, 3; Cheering Squad 3; Blue and White 1, 2; A. A. 1, 2, 3; Homeroom Officer 1, 2; Yearbook Staff; Chairman Senior Play 3; Publicity Committee; Usher at Graduation; Glee Club 1, 2, 3; Social Committee 1, 2; Traffic Squad 3; Usher at Carnival Ball 3

**DONALD PEACOR**

*A good mind possesses a kingdom.*  
Studious . . . geologist . . . good sport  
Blue and White 1, 2; A. A. 1, 2, 3; Glee Club 1, 2, 3; Yearbook Staff



**ELIZABETH PULSIFER**

*Look in her eye, see an angel; look longer, see an imp.*

Typing expert . . . Lizzy . . . songster  
Blue and White 1, 2; A. A. 1, 2, 3; Homeroom Officer 1, 2; Glee Club 1, 2, 3; Yearbook Staff; Senior Play Committee

**JOAN RAFFERTY**

*Charm personified, grace dignified.*  
Sincere . . . original . . . efficient

Basketball 1; Field Hockey 1; Blue and White 1, 2; Student Council 2; A. A. 1, 2, 3; Homeroom Officer 1, 2, 3; Usher at Graduation 2; Glee Club 1, 2, 3; Yearbook Staff

**ROSEMARY RICKS**

*Sugar and spice and everything nice.*  
Who's that blonde? . . . radiant smile . . . Southern belle

Basketball 1, 3; Blue and White 1, 2; Student Council 3; A. A. 1, 2, 3; Homeroom Officer 1; Usher at Graduation 2; Glee Club 1, 2, 3; Social Committee 2; Senior Play Committee 3; Majorette 1, 2, 3

**JOHN ROBINSON**

*A jovial, coaxing manner, a smile and friendly welcome for all.*

"Jack" . . . smooth dancer . . . impersonator

Football 2, 3; Baseball 2, 3; Blue and White 2; A. A. 2, 3; Homeroom Officer 3; Marshall at Graduation 2; Glee Club 2, 3



**ROGER ROUILLARD**

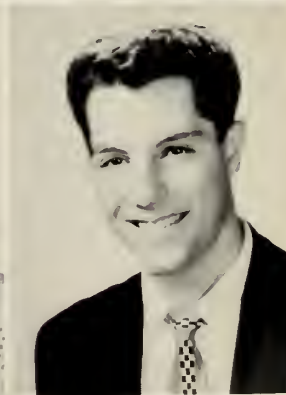
*I will find a way or make one . . .*  
Outdoors . . . quiet manner . . . undisturbed

A. A. 1, 3; Glee Club 1, 2, 3

**JAMES RUMA**

*A captivating smile and wavy hair will get him anywhere.*

Hockey 3; Baseball 3; Blue and White 2; Student Council Treasurer 3; A. A. 2, 3; Class President 3; Senior Play Committee; Glee Club 2, 3



**ROY SAMPLE**

*To find a better friend would be impossible.*

Future scientist . . . reliable . . . good natured

Blue and White 1, 2; Homeroom Officer 1; Senior Play Committee 1; A. A. 1, 2, 3

**ANNA SAUNDERS**

*At peace with all . . .*

Always laughing . . . friendly . . . loyal

Basketball 2, 3; Blue and White 1, 2; A. A. 1, 2, 3; Glee Club 1, 2, 3





**JOHN SAUNDERS**

*If laughter were a crime, he a master criminal would be.*

Sincere . . . unassuming . . . cooperative

Blue and White 1, 2; A. A. 1, 2, 3; Glee Club 1, 2, 3

**NANCY SCAMMON**

*To know her is to love her.*

Fashion on parade . . . poised . . . Dartmouth . . . captivating smile

Basketball 1, 2, 3; Field Hockey 1, 2; Cheering Squad 2, 3; Traffic Squad 2, 3; Blue and White 1, 2; Student Council 1, 2; A. A. 1, 2, 3; Class Secretary 2; Social Committee 3; Homeroom Officer 1; Usher at Graduation 2; Glee Club 1, 2, 3; Usher at Carnival Ball 2; Chairman Senior Play Committee; Winter Carnival Attendant 3



**CAROLYN SEAVER**

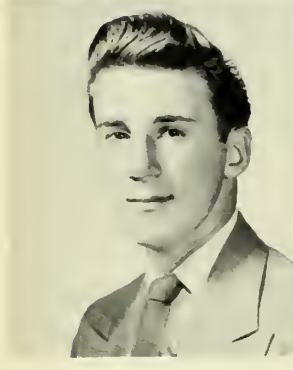
*A charming smile and a friendly face will go far.*

Pep . . . personality . . . Wakefield Basketball 1, 2, 3; Field Hockey 1, 2, 3; Cheering Squad 2, 3; Traffic Squad 1; Blue and White 1, 2; A. A. 1, 2, 3; Homeroom Officer 1, 2, 3; Head Usher at Senior Play; Glee Club 1, 2, 3; Usher at Carnival Ball 3

**WALTER SEPPI**

*A mind content both crown and kingdom is.*

Wally . . . roguish smile . . . courteous Basketball 1; A. A. 1, 2, 3; Blue and White 1, 2; Homeroom Officer 1; Glee Club 1, 2, 3



**DAVID SHEETS**

*Smacked his lips, and then he kissed her.*

Real garbardine . . . sharp dresser . . . dancer

Football 1, 2; Baseball 1, 2, 3; Basketball 1, 2, 3; Blue and White 1, 2; Student Council 1, 2; A. A. 1, 2, 3; Band 1, 2; Class President 2; Homeroom Officer 1, 2; Senior Play; Usher at Graduation 2; Glee Club 1, 2, 3

**PEGGY ANN SIMMONS**

*A face that wins friends; a personality that keeps them.*

Short and sweet . . . hockey star . . . here, there, n'everywhere

Basketball 1, 2; Field Hockey 1, 2, 3; A. A. 1, 2, 3; Blue and White 1, 2; Homeroom Officer 1, 2, 3; Usher at Graduation 2; Glee Club 1, 2, 3; Majorette 3; Winter Carnival Attendant 2, 3; Social Committee 1, 2; Yearbook Staff; Usher at Senior Play; Senior Play Committee

**DONALD SIMONS**

*The more a man knows; the more worthy he is.*

Tommy . . . Mr. Carrier's protege . . . inquisitive

Traffic Squad 2, 3; A. A. 1, 2, 3; Homeroom Officer 2; Yearbook Staff; Senior Play; Glee Club 1, 2, 3

**DONALD SIMPSON**

*I'd rather be small and shine than be large and cast a shadow.*

Pleasing . . . that physics exam! . . . cheerful

Hockey 2, 3; A. A. 1, 2, 3; Blue and White 1, 2; Senior Play Committee; Glee Club 1, 2, 3

**JEAN SMITH**

*Charm that strikes the sight; merit that wins the soul.*

Smitty . . . distinctive coiffure . . . lunch wagon

Blue and White 1, 2; A. A. 1, 2, 3; Usher at Senior Play 3; Usher at Graduation 2; Glee Club 1, 2, 3

**WILLIAM SPATARO**

*Always winning, always grinning*  
Impersonations . . . submarine sandwiches . . . antics

A. A. 1, 2, 3; Homeroom Officer 2; Blue and White 1, 2; Glee Club 1, 2, 3





**JOAN SPOONER**

*It's great to be good-natured; it always wins the heart.*

"Practice tonight, girls" . . . stylish . . . energetic

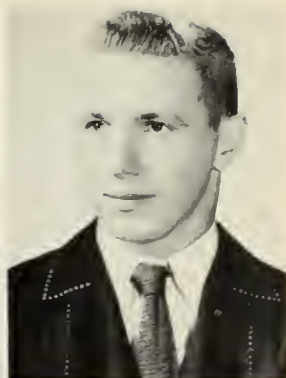
Blue and White 1, 2; A. A. 1, 2, 3; Usher at Graduation 2; Glee Club 1, 2, 3; Majorette 1; Head Majorette 2, 3; Usher at Carnival Ball 3

**RICHARD STEELE**

*Wherever he sits, there is the head of the table.*

One of the boys . . . "Steele Dick" . . . sports

Football 1, 2, 3; Baseball 1, 2, Captain 3; Basketball 1, 2, Captain 3; Traffic Squad 1, 2, 3; Blue and White 1, 2; Student Council 1, 2, President 3; A. A. 1, 2, 3; Class President 1; Class Vice President 3; Homeroom Officer 1, 2, 3; Usher at Graduation 2; Glee Club 1, 2, 3



**RICHARD TAYLOR**

*Lanky, laughable, and lovable*

"Dick" . . . Review Math . . . merriment

Football 3; Basketball 2, 3; Boys' State 2; Homeroom Officer 3; Senior Play Committee 3; Usher at Graduation 2; Glee Club 1, 2, 3

**DOROTHY THIEDE**

*Where there's fun she's always in it. Dolly . . . well-dressed . . . perpetual motion*

Blue and White 1, 2; A. A. 1, 2, 3; Homeroom Officer 1; Majorette 1, 2; Glee Club 1, 2, 3



**CHESTER THIEME**

*Friends are all that matter.*

"Cbet" . . . math whiz . . . sly humor

Hockey 2, 3; Baseball 2, 3; Traffic Squad 2, 3; Blue and White 1, 2; A. A. 1, 2, 3

**LLOYD THISTLE**

*When you're tall, there's more of you to like.*

Tall . . . mischievous . . . "Thiss" Blue and White 1, 2; A. A. 1, 2, 3; Glee Club 1, 2, 3



**EDWARD THOMPSON**

*He's here, he's there and all about; lots of pep and a real good scout. "Zip" . . . good humor . . . whiffle*

Football 1, 2, 3; Baseball 1, 2, 3; Basketball 1, 2, 3; Student Council 3; Social Committee 2; Class Chairman of Social Committee 3; Usher at Graduation 2; Glee Club 1, 2, 3

**JOYCE THORNTON**

*Pretty to walk with; witty to talk with. "Stanley dear—" . . . enthusiastic . . . loyal*

Homeroom Officer 2; Yearbook Staff: Senior Play; Usher at Graduation 2; Glee Club 1, 2, 3; Usher at Carnival Ball 3



**MARILYN TRAVERSE**

*At a glance you'd think her shy. Long wavy hair . . . demure . . . future secretary*

Field Hockey 1; Blue and White 1, 2; A. A. 1, 2, 3; Yearbook Staff; Usher at Senior Play; Glee Club 1, 2, 3; Usher at Carnival Ball 3

**BETTY TREACY**

*She is the happy kind whose nature never worries.*

"Those crazy peg pants" . . . good dancer . . . "Harold"

Field Hockey 1; Blue and White 1, 2; A. A. 1, 2, 3; Senior Play Committee; Glee Club 1, 2, 3; Usher at Carnival Ball 3



**RUSSELL TYLER**

*The doors of wisdom are never shut.*  
Steadfast . . . diligent . . . trust-  
worthy

Traffic Squad 2, 3; Blue and  
White 1, 2; A. A. 1, 2, 3; Yearbook  
Staff; Social Committee 1, 2;  
Senior Play; Boys' State 2; Glee  
Club 1, 2, 3

**LOUISE URBAN**

*Good natured and a good friend.*  
"Neal" . . . friendly . . . quiet

Blue and White 1, 2; A. A. 1, 2,  
3; Glee Club 1, 2, 3; Senior Play  
Committee



**KATHLEEN VALLELY**

*It is good to have crossed her path.*  
Cheverus . . . good natured . . .  
well-mannered

Usher at Senior Play; Glee Club 3

**ROBERT VAN TICHELT**

*A friendship that makes the least  
noise is often the best.*

"Van" . . . tall . . . sincere  
Basketball 2; A. A. 1, 2, 3



**BEATRICE VIERA**

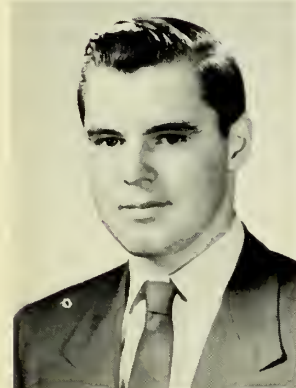
*Everyone's favorite partner on the  
dance floor.*

"Beadie" . . . clothes . . . gay smile  
. . . dancing

Basketball 1, 2, 3; Blue and  
White 1, 2; A. A. 1, 2, 3; Homeroom  
Officer 1, 3; Usher at Graduation 2;  
Usher at Senior Play; Glee Club  
1, 2, 3; Majorette 2, 3; Yearbook  
Staff; Usher at Carnival Ball

**PAUL VIEIRA**

*Better late than never.*  
Positive outlook . . . alert . . . sincere  
A. A. 3; Glee Club 3



**KENNETH LEE VOGLER**

*Laugh and the world laughs with you.*

"Lee" . . . hockey . . . carefree

Football 2; Hockey 1, 2, 3;  
Baseball 1, 2, 3; Blue and White  
1, 2; A. A. 1, 2, 3; Senior Play;  
Glee Club 1, 2, 3

**THOMAS WALSH**

*Fond of beauty, life and laughter*  
Humor . . . opinions . . . cartoons  
Baseball 1, 3; Basketball 1, 3;  
Blue and White 1, 2; Student  
Council 1; A. A. 1, 2, 3; Class  
Vice President 1; Yearbook Editor;  
Senior Play; Glee Club 1, 2, 3



**SANDRA WARDWELL**

*She is liked everywhere all of the time.*

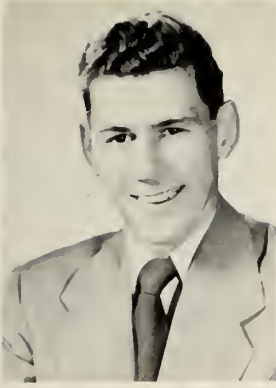
"Ticky" . . . smart dresser . . .  
good-looking

Basketball 1, 2, 3; Field Hockey  
1, 2; Majorette 2; Cheering Squad  
3; Blue and White 1, 2; Student  
Council 2, 3; A. A. 1, 2, 3; Class  
Treasurer 2, 3; Homeroom Officer 1;  
Prompter Senior Play; Marshal at  
Graduation 2; Glee Club 1, 2, 3;  
Winter Carnival Attendant 3

**CHARLES WAYMAN**

*Sparkling eyes and a merry heart.*  
Charlie . . . generous . . . nonchalant  
Hockey 1, 2, 3; Blue and White  
1, 2; A. A. 1, 2, 3; Glee Club 1, 3





**BEVERLY WILBY**

*She may be quiet, she may be shy  
But see the mischief in her eyes.  
"Bevie" . . . artist . . . tiny*  
Basketball 1; A. A. 1, 2, 3; Blue  
and White 1, 2; Glee Club 1, 2, 3

**RICHARD WOOD**

*By his stories you will know him.  
"Woodsey" . . . tall stories . . .  
Reading Canteen*  
Baseball 1, 2; Basketball 1; Blue  
and White 1, 2; Glee Club 1, 2, 3;  
A. A. 1, 2, 3



**DAVID WOODBURY**

*Thou art great in many different ways.  
Three-letter man . . . dependable  
. . . good sport*  
Football 1, 2, 3; Baseball 1, 2, 3;  
Basketball 1, 2, 3; Traffic Squad 1,  
2, Captain 3; Blue and White 1, 2;  
Homeroom Officer 1, 2; Usher at  
Graduation 2; Boys' State 2;  
Glee Club 1, 2, 3

**GUY ZACCONI**

*The world would be a better place  
if there were more like you.  
"Zac" . . . '38 Ford . . . loyal friend*  
Traffic Squad 1; Blue and White  
1, 2; Glee Club 1, 2, 3; A. A. 1, 2, 3

**DONALD BECKWITH**

*So quiet, so unanswering is he.  
Fire chief . . . obliging . . . courteous*  
Glee Club 1; Blue and White  
1, 2; A. A. 1, 2, 3

**JOSEPH DIXON**

*Come now, my friends.  
"Joe" . . . beach parties . . . choc-  
olate cookies*  
Football 1, 2, Captain 3; Base-  
ball 1, 2, 3; Basketball 1, 2, Captain  
3; A. A. 1, 2, 3; Homeroom Officer 3;  
Glee Club 1, 2, 3

**ROBERT ESTEE**

*Still waters run deep  
Individual . . . reserved . . . cheerful*  
A. A. 1, 2, 3

**ONWARD**

*When high school days are over  
And we start on our way  
To reach the goal that we have set  
For some bright future day,  
The pathway may be rocky  
And filled with trials untold —  
But with God's help and blessing  
We'll reach our distant goal.*

— C. H.

# Here's Now



*Gerry Griffin, flirt, heartbreaker; Carolyn Seaver, most talkative; Peggy Ann Simmons, sweetheart*

*Carol Peacock, class leader, most studious, most reliable, most efficient, most likely to succeed; Russell Tyler, most efficient, most studious, most likely to succeed*



*Peter Berrini, best all around, most school spirited, most reliable, sweetheart; Mary Lou Gigante, best all around, best natured, most school spirited*



*Class pair — Joe Dixon, class athlete; Sandra Wardwell*



*Joyce Thornton, class actress; Herb Bohling, actor; Beverly Wilby, artist; Tom Murphy, artist; Murray McCharles, musician*



# They Voted...

## FAVORITES

- Actor — *Burt Lancaster*
- Actress — *Marilyn Monroe*
- Pastime — *Sleeping and Dancing*
- Singers — *Patti Page and Eddie Fisher*
- Song — *"You, You, You"*
- Sport — *Hockey*
- Subject — *Biology*
- TV Program — *Dragnet*
- Band — *Ralph Flanagan*
- Comics — *Dean Martin — Jerry Lewis*
- Funniest Event — *Senior Play*
- Favorite Movie — *From Here To Eternity*
- Most Remembered Event — *Senior Play*

*Carol McCarthy*, most inquisitive; *John Fleisher*, most talented; *James Ruma*, most personality, best dressed, class leader; *Nancy Scammon*, best dressed



*Roy Sample*, scientist; *Carol Carbone*, scientist, athlete; *Mike Malonson*, most inquisitive

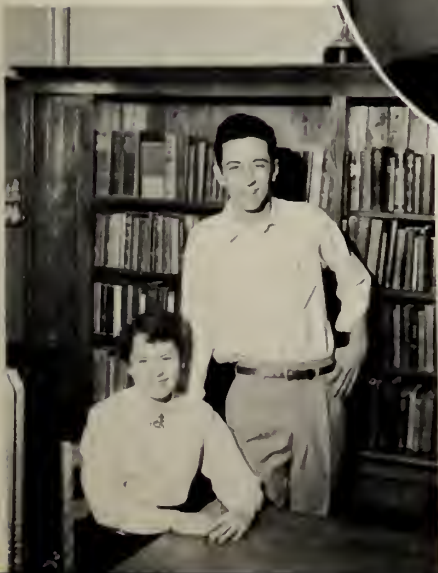


*Mr. Frank Driscoll*, favorite teacher



*Betty Treacy*, best dancer; *Al Duff*, best dancer, most talkative, class comedian

*Loretta Marks*, comedian; *Martha Hanford*, most quiet; *Janet Murphy*, man-hater, most bashful; *John Dirkman*, most bashful; *Chester Thieme*, woman-hater; *John Saunders*, most quiet



*Dot Heyward*, most popular, talented, most personality, class musician; *Jack Robinson*, best natured, most popular, flirt, heartbreaker



1954

# SENIORS

SENIOR  
PLAY



BUSY IN THE LIBRARY



A RIDE TO SCHOOL

PROM

GARNIVAL  
BALL



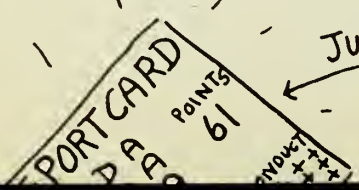
THE DAY  
SENIOR BOYS DRESSED UP



SPORTS



FAREWELL!



JUST MADE  
IT!

SPRING  
CONCERT





*Photo Staffers Devlin, Emery, Simmons, Hanson, and Flor check Nancy's technique*

## ON BEING A SENIOR

*I walk down the hall, not saying a word,  
 But aware of a whisper that I've overheard;  
 "Now look, Bud, a senior, as real as can be!"  
 I say to myself, "Are they pointing at me?"  
 Well, what is a senior? Let's get to the point.  
 They're people in high school who run the darn joint.  
 But school's really fun; you can take it from me,  
 And being a senior is great, you'll agree.*

— T. W.

**TYPING STAFF:** *Chairman Margaret Angelosanto; First row — Marilyn Mattsen, Frances Morabito, Geraldine Griffin, Irene Doucette; Second row — Richard Bemis, Rose Desmond, Marilyn Traverse, Maureen Buckley, Carole Butters; Business Adviser — Mrs. Margaret Garvin*





# Want a Job

**YOU'LL REALLY ENJOY ?**

*Here's what the  
Telephone Company offers  
girls finishing High School—*

- ✓ A chance to fill an important job.
- ✓ A chance to earn good pay, regular raises, paid vacations.
- ✓ A chance to enjoy friendly companionship, meet new people, make new friends.

This is your chance to do vital work . . . get a job with plenty of responsibility and opportunity for advancement . . . be associated with a reliable Company that's known and respected everywhere — a Company you'll be proud to work for. Come in and talk to us. Get all the details. But do it now, so you'll have a head start.

The  
**NEW ENGLAND Telephone & TELEGRAPH**  
Company



---

## SPONSORS

Art's Radio and Television  
Akeson Fuel Co.  
Dr. Raymond Bresnahan  
Children's Corner  
Dr. Thomas P. Devlin  
Fallon's Farm  
Fortini's Market  
Hodgson's Jenny Station  
Kirkland's Service Station  
Lucci's Market  
Marilyn Sandal Co.  
McIntire Bus Lines  
Prescott Fuel Co.  
Pullo's Rexall Drug Store  
Sloane's Furniture  
Stoneham Lumber Co.  
Stoneham Theater  
Dr. A. L. Tauro

# it's the "Know How"

Years of experience in serving thousands and thousands of Undergrads have given Kennedy's the "Know How," so important to all high and Prep school men. That's why — season after season — Undergrads come back to Kennedy's for their every clothing need.

## KENNEDY'S UNDERGRAD SHOPS

BOSTON • PROVIDENCE • WORCESTER  
SPRINGFIELD • HARTFORD • BROCKTON  
FRAMINGHAM



### JAUNTY STYLE SHOP

Specializing in Sports Wear  
for  
TEENS — MISSES — LADIES

MRS. C. E. BRYANT

340 MAIN STREET, STONEHAM



PRINTING . . .

is our business!

LETTERPRESS – OFFSET – ENGRAVING

The Stoneham Independent Inc.

11 FRANKLIN STREET

ST oneham 6-1660

---

COMPLIMENTS AND GOOD WISHES  
FOR YOUR SUCCESS

The Leather Fashioners  
and Craftsmen Co.

MAYNARD H. MOORE, JR., Treasurer

# *Sponsors*

A & K Jewelers  
Bell's Hardware  
Cella and Crocetti  
Cimina's Children's and Ladies  
Wearing Apparel  
Dr. Paul Fitzgerald  
Dr. Ralph S. Greenslade  
Hamilton Read Estate  
Homer Real Estate  
Lantz and Tilton  
Mark's Shoe Store  
McDonough's Market  
Middlesex Drug Store  
Provost Market  
Schaefer's News  
H. P. Smith  
Stoneham Spa  
Sunlite Bowling Alleys  
Zaltman Insurance



— FOR RADIANT HEALTH —

## Sunnyhurst Dairy Products

ME 4-5400

214 MAIN ST., STONEHAM

---

**CONGRATULATIONS**

**CLASS OF 1954**

**THE E. L. PATCH CO.**

STONEHAM, MASS.

# Lombard Lumber Co.

35-37 POMEWORTH STREET

STONEHAM 80, MASS.

SToneham 6-0098 — 0184

---

*You'll be ahead with*  
**Nash**

## Pettengill Motor Sales

Franklin Street at Stoneham Square

Stoneham 80. Mass.



**HARADON LINOLEUM SHOP**

Expert Workmanship

301 MAIN STREET

STONEHAM 80, MASS.

Tel. SToneham 6-0911

---

**A. P. Rounds**

REALTOR and BUILDER

*Established 1921*

Office: Sto. 1500 — Home: Sto. 0680

*ALL BUILDING MATERIALS*

Specializing in Stoneham and  
North of Boston Properties

Telephone Sto. 6-1122-0036

211 Main Street

Compliments of  
FREDERICK P. HANFORD — FRANK M. GEREMONTE  
Attorneys-at-Law  
393 MAIN STREET STONEHAM 60, MASS.  
Tel. SToneham 6-1070

---

# CONGRATULATIONS

TO THE

**CLASS OF 1954**

**NORDBERG'S RESTAURANT**



## SPONSORS

John Avedis  
Drs. Baxter and Sherman  
Mrs. Henry Blout — Hairdresser  
Dr. Edward F. Breagy  
Bill's Market  
Brown Real Estate  
Camp Wamindi  
Chapman's Beverages  
Clifton's Variety  
Collins — Antiques  
William C. Doherty  
Fellsway Pharmacy  
W. W. Fiske  
Gay, the Florist  
George's Restaurant  
O. Gilmore  
Hall, Inc.  
Jim Lee — Laundry  
Kelley's Esso  
A. F. Lane, Pontiac  
Louella Munn  
Margaret's Beauty Shop

Marble St. Store  
Masi's Service Station  
Meister's Bakery  
Meyer's Electrical Servants  
H. W. Mellett & Son  
C. H. Mortensen Co.  
Potter's Taxi  
Pressman's Cleaners  
Quality Meat Market  
Sam, the Barber  
Severance Moving & Trucking  
Shepherd & Betts  
Stoneham Dye House  
Stoneham Launderette  
Stoneham Motor Co.  
Stoneham Sign Co.  
Towne Dry Cleaning Co.  
Vogue Shop  
D. E. Warren  
Weiss Farm  
Whitney's Pharmacy  
Wills Hardware

To the Class of 1954

**THE CLASS OF 1955**

HOPE FOR THE BEST OF LUCK  
IN THE FUTURE FOR YOU.

---

FRESH EGGS  
at reasonable prices

**RAYNER POULTRY FARM**

111 SPRING STREET

STONEHAM 60, MASS.



CONGRATULATIONS

CLASS of 1954

New England Sanitarium and Hospital

WOODLAND ROAD

STONEHAM, MASS.

TO THE CLASS  
OF 1954

**Good Luck and Best Wishes**  
for a  
**Successful Future**

From the Class of "56"

---

6A MONTVALE AVENUE

STONEHAM, MASS.

**WATERPROOFING ENGINEERING COMPANY**  
**Waterproofing and Weatherproofing**

Consulting Engineer  
L. H. MASSE

Stoneham 6-0330



# NORTHEASTERN UNIVERSITY

BOSTON 15, MASSACHUSETTS

MEN AND WOMEN ADMITTED TO ALL COURSES

*College of Education*

*\*College of Liberal Arts*

*\*College of Engineering*

*\*College of Business Administration*

*School of Business (Evening Sessions)*

*College of Liberal Arts (Evening Sessions)*

ALL CURRICULA OFFER SOUND EDUCATION FOR LIVING  
AND FOR DEVELOPING PROFESSIONAL COMPETENCE.

## *Registration*

Early in September

*You are cordially invited to visit the University  
to discuss plans for furthering your education.*

\*CO-OPERATIVE PLAN

SCHOLARSHIPS

SELF-HELP OPPORTUNITIES

FOR CATALOG — MAIL THIS COUPON AT ONCE

NORTHEASTERN UNIVERSITY

*Director of Admissions*

*Boston 15, Massachusetts*

Please send me the following catalog.

### DAY COLLEGES

- College of Education
- College of Liberal Arts
- College of Engineering
- College of Business Administration

### EVENING SCHOOLS

- College of Liberal Arts (Evening Sessions)
- School of Business (Evening Sessions)

Name.....

Address.....  
H (Street) (City or Town) (P. O. Numerals) (State)

---

---

**THE  
WARREN KAY VANTINE STUDIO  
INCORPORATED**

*Official Photographers*

**FOR THE CLASS OF 1954**



WE HOPE THAT BY HANDLING ALL PHASES  
OF THE PHOTOGRAPHY AND PRINTING FOR  
THE 1953 YEARBOOK, WE HAVE RELIEVED  
THE YEARBOOK STAFF OF MUCH DETAIL,  
AND HAVE PRODUCED A FINER BOOK



**132 BOYLSTON STREET, BOSTON, MASSACHUSETTS**

**HA ncock 6-0743-44**

---

---





